

# Global burden of peripheral artery disease and its risk factors, 1990–2019: a systematic analysis for the Global Burden of Disease Study 2019



GBD 2019 Peripheral Artery Disease Collaborators\*



## Summary

**Background** Peripheral artery disease is a growing public health problem. We aimed to estimate the global disease burden of peripheral artery disease, its risk factors, and temporospatial trends to inform policy and public measures.

**Methods** Data on peripheral artery disease were modelled using the Global Burden of Disease, Injuries, and Risk Factors Study (GBD) 2019 database. Prevalence, disability-adjusted life years (DALYs), and mortality estimates of peripheral artery disease were extracted from GBD 2019. Total DALYs and age-standardised DALY rate of peripheral artery disease attributed to modifiable risk factors were also assessed.

**Findings** In 2019, the number of people aged 40 years and older with peripheral artery disease was 113 million (95% uncertainty interval [UI] 99·2–128·4), with a global prevalence of 1·52% (95% UI 1·33–1·72), of which 42·6% was in countries with low to middle Socio-demographic Index (SDI). The global prevalence of peripheral artery disease was higher in older people, (14·91% [12·41–17·87] in those aged 80–84 years), and was generally higher in females than in males. Globally, the total number of DALYs attributable to modifiable risk factors in 2019 accounted for 69·4% (64·2–74·3) of total peripheral artery disease DALYs. The prevalence of peripheral artery disease was highest in countries with high SDI and lowest in countries with low SDI, whereas DALY and mortality rates showed U-shaped curves, with the highest burden in the high and low SDI quintiles.

**Interpretation** The total number of people with peripheral artery disease has increased globally from 1990 to 2019. Despite the lower prevalence of peripheral artery disease in males and low-income countries, these groups showed similar DALY rates to females and higher-income countries, highlighting disproportionate burden in these groups. Modifiable risk factors were responsible for around 70% of the global peripheral artery disease burden. Public measures could mitigate the burden of peripheral artery disease by modifying risk factors.

**Funding** Bill & Melinda Gates Foundation.

**Copyright** © 2023 The Author(s). Published by Elsevier Ltd. This is an Open Access article under the CC BY 4.0 license.

## Introduction

Lower extremity peripheral arterial disease is an atherosclerotic disease of the peripheral vasculature leading to arterial stenosis or occlusion of the lower limbs, which can manifest as intermittent claudication, ischaemic pain, and functional impairment.<sup>1,2</sup> Peripheral artery disease is a growing public health problem due to its high and rising prevalence worldwide; however, it often remains unrecognised and undertreated.<sup>3,4</sup>

Although peripheral artery disease has been studied extensively in high-income countries,<sup>5–7</sup> the burden of peripheral artery disease in countries with lower socioeconomic development has been overlooked. However, low-income and middle-income countries are undergoing an epidemiological transition in which the prevalence and burden of cardiovascular diseases have been increasing steeply, probably due to industrialisation, urbanisation, and an increase in metabolic risk factors.<sup>5,8</sup> Accounting for population size, more than half of

individuals with peripheral artery disease globally live in low-income and middle-income countries, despite the higher prevalence of peripheral artery disease reported in high-income countries.<sup>9,10</sup> It is crucial to understand a comprehensive global picture encompassing all sociodemographic and spatiotemporal trends of peripheral artery disease.

Because peripheral artery disease involves lifelong disability, measuring cross-sectional prevalence alone would not fully capture the disease burden. However, previous systematic reviews that have estimated global burden have accessed only the prevalence of peripheral artery disease,<sup>9,10</sup> leaving global, regional, and national disability caused by peripheral artery disease unaddressed. The present study aimed to provide disability estimates (ie, disability-adjusted life years [DALYs]), as well as prevalence estimates, for the global distribution of peripheral artery disease burden by analysing data from the Global Burden of Disease, Injuries, and Risk Factors Study (GBD) 2019.

*Lancet Glob Health* 2023;

11: e1553–65

See [Comment](#) page e1478

\*Collaborators are listed at the end of the Article

Correspondence to:  
Prof Jae Il Shin, Department of  
Pediatrics, Yonsei University  
College of Medicine,  
Seoul 03722, South Korea  
[shinji@yuhs.ac](mailto:shinji@yuhs.ac)

### Research in context

#### Evidence before this study

We searched PubMed on December 23, 2022, for articles in English using the search terms (“peripheral artery disease\*”[tiab] OR “peripheral vascular disease\*”[tiab] OR “peripheral artery occlusive disease\*”[tiab] OR “peripheral obliterative arteriopathy”[tiab]) AND (“prevalence\*”[tiab] OR “incidence\*”[tiab] OR “mortality”[tiab] OR “DALY\*”[tiab]) AND (“systematic review\*”[tiab] OR “meta-analysis”[tiab]). No other restrictions were applied to the search. Of 298 published articles, two systematic reviews and meta-analyses reported on global and regional prevalence for peripheral artery disease, three reported on national or regional specific estimates, six reported on the prevalence of specific conditions in patients with peripheral artery disease, and two reported on peripheral artery disease prevalence in specific populations. The Global Peripheral Artery Disease Study has estimated the global and regional prevalence of peripheral artery disease in 2010 (Fowkes and colleagues; analysis of 34 studies) and 2015 (Song and colleagues; 119 studies). However, they have not assessed death or disability attributed to peripheral artery disease. We also curated one Global Burden of Disease, Injuries, and Risk Factors Study (GBD) 2019 study on peripheral artery disease, but it did not address disability-adjusted life-years (DALYs) associated with the disease.

#### Added value of this study

The present study aimed to provide prevalence, incidence, death, and disability estimates (ie, DALYs) to map the global distribution of burden due to peripheral artery disease by analysing data from GBD 2019. Because peripheral artery disease involves lifelong disability, measuring cross-sectional prevalence alone would not fully capture the disease burden of peripheral artery disease. As part of GBD 2019, this study provides estimates for the burden of peripheral artery disease in 21 GBD regions and 204 countries and territories from 1990 to 2019 by age, sex, and country sociodemographic level. Peripheral artery disease burden was measured by prevalence,

incidence, DALYs, and mortality, as well as the peripheral artery disease-related DALYs attributable to modifiable risk factors. The global prevalence of peripheral artery disease was higher in older individuals and, consistent with the findings of Fowkes and colleagues and Song and colleagues, prevalence was higher in females than males. However, the overall disease burden measured by DALYs was similar in both sexes, suggesting a disproportionate burden among males and indicating the need for equivalent attention and care for peripheral artery disease in both sexes. Peripheral artery disease prevalence was higher in countries with high Socio-demographic Index (SDI) and income and lower in countries with low SDI and income, but DALY rates in countries with low SDI and income were disproportionate to prevalence, suggesting that peripheral artery disease has not been adequately managed in these countries. Lastly, in 2019, almost 70% of total peripheral artery disease DALYs globally were attributable to risk factors.

#### Implications of all the available evidence

Despite the lower prevalence of peripheral artery disease in males and low-income countries, these groups showed similar DALY rates to females and higher-income countries, highlighting a disproportionate burden that demands improved action and care. Modifiable risk factors were responsible for around 70% of the peripheral artery disease burden, and therefore implementing interventions aimed at decreasing exposure to risk factors will be crucial to mitigating the global burden of peripheral artery disease. This GBD study can help policy makers direct evidence-based health-care planning, prevention, and resource allocation for those with peripheral artery disease who are at increased risk of disability due to pain and cardiovascular complications. Based on the burden estimations, public health and research priorities should include: developing prevention strategies for peripheral artery disease risk factors; providing care and attention to vulnerable groups; and enriching screening and prevention of peripheral artery disease in lower-income countries.

## Methods

### Overview

Methods relevant to peripheral artery disease GBD are described briefly in this section and in detail in the appendix (pp 2–11, 331–335). For this study, we obtained estimates of incidence, prevalence, cause-specific mortality, years of life lost (YLLs), years lived with disability (YLDs), and DALYs for peripheral artery disease from GBD 2019, as described in the original GBD 2019 report.<sup>11–15</sup>

### Mortality estimates

Detailed methodology for cause-specific mortality estimation is described in the appendix (pp 51–91) and in previous publications.<sup>11</sup> Cause-specific mortality for peripheral artery disease was estimated using the Cause of

Death Ensemble model (CODEm) software with vital registration records as input data.<sup>11</sup> International Classification Disease (ICD) codes in vital registration records were mapped to the GBD cause list (ICD 10: I70.2–I70.8, I73–I73.9, and ICD 9: 440.2, 440.4, 443.0–443.9). Non-specific, intermediate, or implausible causes of death (eg, “heart disease, unspecified”, “heart failure”, “senility”, or “hypertension”) were reassigned to correct underlying causes of death, including peripheral artery disease, via a set of redistribution algorithms developed for GBD 2019.<sup>11</sup> The garbage code redistribution algorithm is described in detail in the appendix (pp 63–69). Country-level covariates associated with peripheral artery disease were included to inform the model.

CODEm produces estimates of cause-specific mortality by age, sex, and location for each year with use of an

See Online for appendix

ensemble of modelling methods with varying choices of covariates determined by model performance in out-of-sample predictive validity testing.<sup>11</sup> Possible covariates were selected based on a priori knowledge of the association between the covariate and peripheral artery disease; this list is in the appendix (pp 2–3). Covariates and combinations of covariates were tested for statistical significance and plausibility (the coefficient must be in the expected direction). Covariates meeting these criteria are retained in the final model.<sup>11</sup> Detailed methods describing the covariate selection process used in CODEm are in the appendix (pp 80–82) and elsewhere.<sup>16</sup> The results obtained with the Ensemble models were then adjusted by scaling them within the fraction of deaths due to all cardiovascular diseases and all-cause mortality. The 2.5th and 97.5th percentiles of the posterior distribution were used to determine uncertainty intervals (UIs).

### Morbidity estimates

The studies eligible for assessing peripheral artery disease prevalence were those that included an ankle brachial index (ABI) measurement and defined peripheral artery disease as ABI less than or equal to 0.90. We excluded literature with different ABI cutoffs to minimise inconsistency. In addition to published studies, we also included health system administrative data, including outpatient claims data for prevalence assessment. We adjusted administrative health-care data using literature data reporting directly measured ABI values as reference data according to the standard adjustment procedure outlined in the appendix (pp 93–116). Details of the search strategy and a full list of the input data sources used in the morbidity analysis are in the appendix (pp 5–9). When calculating YLDs, we only took into account burden from peripheral artery disease with intermittent claudication. Intermittent claudication was defined clinically,<sup>17</sup> as leg pain on exertion in those with an ABI less than or equal to 0.90. We used DisMod-MR to model the proportion of peripheral artery disease with intermittent claudication and used the proportion of intermittent claudication to split the overall prevalence of peripheral artery disease into symptomatic and asymptomatic peripheral artery disease. This approach has been used in previous GBD papers to split prevalence of disease by stage,<sup>18</sup> symptom,<sup>19</sup> and severity.<sup>20</sup> The list of studies we used to calculate the proportion of claudication and further details are provided in the appendix (pp 6–11).

Estimates of peripheral artery disease prevalence and the proportion of peripheral artery disease cases with intermittent claudication were calculated using two separate DisMod-MR 2.1 models.<sup>11</sup> DisMod-MR is a Bayesian geospatial disease modelling approach that uses different disease parameters (eg, prevalence, incidence, remission, and mortality), epidemiological relationships between these parameters, and geospatial patterns to

generate disease estimates. The model ensures consistency among all disease parameters by employing differential equations with suitable boundary conditions. The tool incorporates an offset log-normal model with fixed effects for location-specific covariates and random effects for locations. The covariates included in the models are listed in the appendix (pp 101–124). Estimates were made for seven super-regions, 21 world regions, and 204 countries and territories with use of a geographic cascade, as described in the appendix (pp 116–117). Disease distributions from higher geographical levels were used as priors to information for the next levels. The peripheral artery disease DisMod-MR models were evaluated based on comparisons with estimates from previous iterations of GBD and expert review via the GBD collaborator network.<sup>11</sup>

### Summary burden measures

To compare disease burden across locations, GBD 2019 computed three summary measures. YLLs were calculated as the difference between the age of death for peripheral artery disease and the maximum life expectancy across all locations observed in GBD 2019. YLDs were calculated as the product of the disability weights<sup>21</sup> for symptomatic and asymptomatic peripheral artery disease and the corresponding prevalence; information on disability weights for these two health states is in the appendix (p 10). DALYs are calculated as the sum of YLLs and YLDs to provide a comprehensive picture of the disease burden due to each cause. Age-standardised rates per 100 000 population were computed by the direct method to the GBD population standard.

### Risk factors

The GBD comparative risk assessment framework was used to estimate the burden of peripheral artery disease attributable to six risk factors: smoking, high fasting plasma glucose, high blood pressure, kidney dysfunction, high sodium intake, and lead exposure. These risk factors were selected based on the following criteria: sufficient evidence for causation for each risk-outcome pair using the Bradford Hill criteria; availability of risk exposure data; and potential for risk modification and policy relevance. Peripheral artery disease-related attributable burden was estimated by age, sex, country, and year. Further information about the methodology is in the appendix (pp 12–50) and in previous GBD publications.<sup>11</sup>

### Role of the funding source

The funder of this study had no role in study design, data collection, data analysis, data interpretation, or writing of the report.

## Results

### Global burden of peripheral artery disease

The age-standardised DALYs, mortality, prevalence, and incidence rates of peripheral artery disease at the country

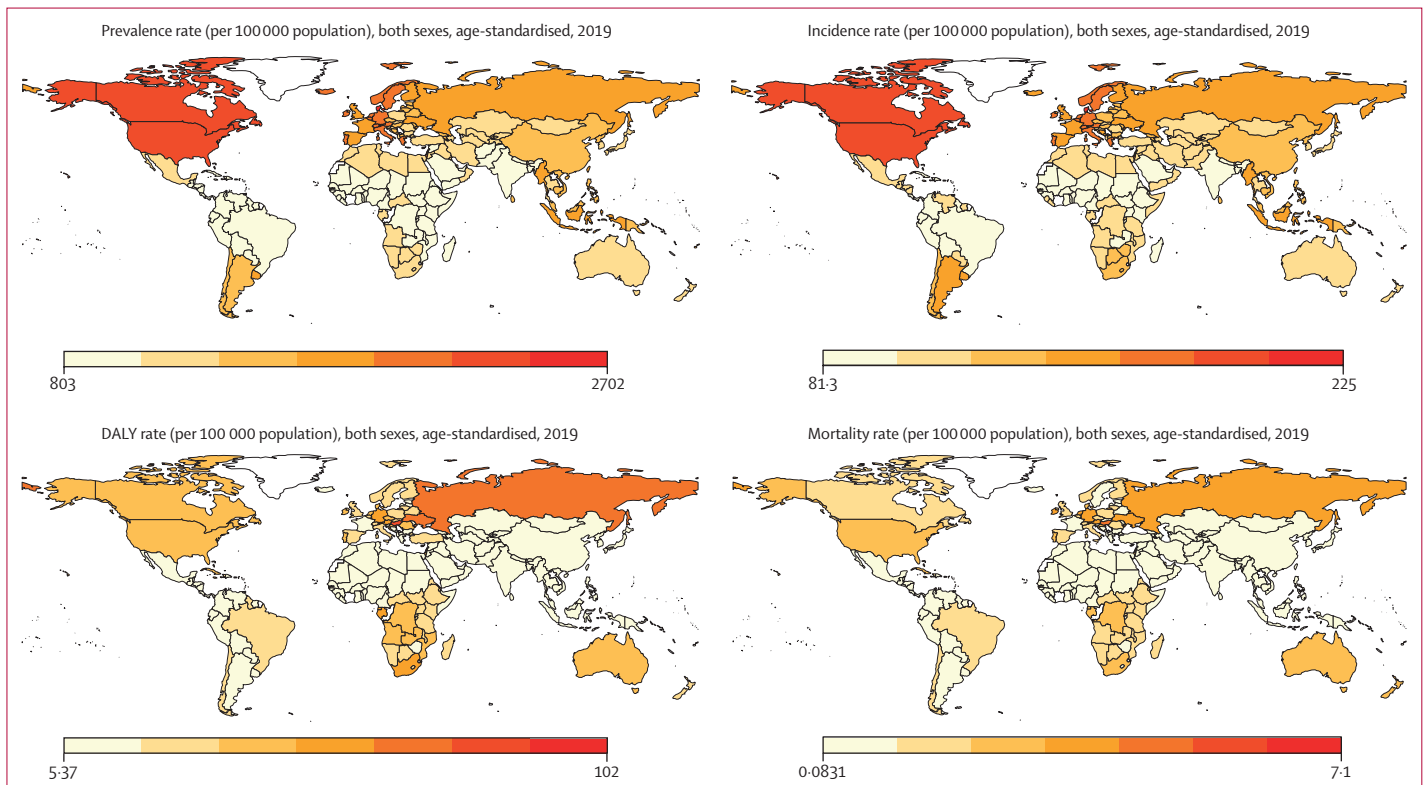
level are shown in figure 1. In 2019, the global prevalence of peripheral artery disease was 1.52% (95% UI 1.33–1.72), of which 42.61% was in countries with low to middle Socio-demographic Index (SDI); the global prevalence of peripheral artery disease was substantially higher in females (2.03% [1.77–2.30]) than in males (1.01% [0.88–1.16]) from 1990 to 2019 (table). The global prevalence of peripheral artery disease was higher in older people (14.91% [12.41–17.87] in those aged 80–84 years), and the prevalence diverged by sex (18.03% [15.01–21.63] in females and 10.56% [8.78–12.76] in males). Globally, the total number of patients with peripheral artery disease almost doubled from 65.8 million (95% UI 57.2–74.5) in 1990 to 113 million (99.2–128.4) in 2019 (appendix pp 140–151, figure 2A). However, global age-standardised prevalence rates decreased during the study period, from 1790 per 100 000 population (95% UI 1564–2033) in 1990 to 1402 per 100 000 population (1229–1589) in 2019, a 21.7% (95% UI 20.5–22.8) decrease (appendix pp 140–151, figure 2B). Similarly, the total number of DALYs increased two-fold from 0.776 million (95% UI 0.488–1.178) in 1990 to 1.536 million (1.007–2.370) in 2019, whereas age-standardised DALY rates decreased from 22.4 per 100 000 population (95% UI 14.1–34.1) in 1990 to 19.6 per 100 000 population (12.9–30.2) in 2019 (appendix pp 152–163, figure 2).

Age-specific prevalence peaked at age 70–74 years and age-specific incidence peaked at age 65–69 years (figure 3). The highest number of DALYs occurred at age 70–74 years for males, whereas the distribution was skewed towards older age for females, with the highest number of DALYs at age 80–84 years (appendix pp 336–37).

#### Burden of peripheral artery disease according to SDI

The disease burden of peripheral artery disease was associated with SDI level (appendix p 135). The age-standardised prevalence rates of peripheral artery disease increased with increasing SDI quintile, with the high SDI quintile having the highest prevalence rate (1794 per 100 000 population [95% UI 1585–2006]) and the low SDI quintile having the lowest prevalence rate (938.6 per 100 000 population [815.0–1074.6]) in 2019 (appendix pp 140–151). Furthermore, from 1990 to 2019, higher SDI quintiles underwent a steep decrease in peripheral artery disease age-standardised prevalence rates, with a decrease of 34.0% (95% UI 32.0–35.8) in the high SDI quintile and of 15.4% (14.2–16.4) in the high-middle SDI quintiles from 1990 to 2019, whereas in lower SDI quintiles, the rates remained stable (appendix p 135).

Higher SDI quintiles tended to have higher DALY and mortality rates, with the high and high-middle quintiles having the highest DALY and mortality rates across the study period (1.5 peripheral artery disease



**Figure 1: Geographical distribution of age-standardised rates of peripheral artery disease in 2019**  
DALY=disability-adjusted life-year.

	Prevalence in females, % (95% UI)			Prevalence in males, % (95% UI)			Overall prevalence, % (95% UI)		
	HICs	LMICs	Global	HICs	LMICs	Global	HICs	LMICs	Global
All ages (≥40 years)	4.48% (3.94–5.03)	1.01% (0.87–1.15)	2.03% (1.77–2.30)	2.73% (2.39–3.08)	0.57% (0.49–0.65)	1.01% (0.88–1.16)	3.62% (3.18–4.07)	0.79% (0.68–0.90)	1.52% (1.33–1.72)
40–44 years	1.23% (0.95–1.55)	0.43% (0.32–0.57)	0.62% (0.47–0.81)	0.49% (0.37–0.63)	0.30% (0.22–0.40)	0.34% (0.25–0.45)	0.85% (0.66–1.09)	0.37% (0.27–0.49)	0.48% (0.36–0.63)
45–49 years	2.08% (1.69–2.49)	0.99% (0.76–1.25)	1.36% (1.08–1.68)	1.01% (0.81–1.24)	0.66% (0.51–0.83)	0.73% (0.57–0.91)	1.54% (1.26–1.85)	0.82% (0.64–1.03)	1.05% (0.82–1.29)
50–54 years	2.98% (2.40–3.64)	1.84% (1.40–2.37)	2.45% (1.89–3.11)	1.83% (1.45–2.26)	1.19% (0.91–1.52)	1.32% (1.02–1.67)	2.41% (1.93–2.95)	1.51% (1.16–1.95)	1.89% (1.46–2.39)
55–59 years	4.11% (3.36–4.87)	2.95% (2.31–3.58)	3.75% (2.97–4.52)	3.11% (2.54–3.67)	1.88% (1.48–2.28)	2.14% (1.71–2.58)	3.62% (2.97–4.26)	2.42% (1.90–2.94)	2.96% (2.35–3.56)
60–64 years	5.75% (4.71–6.87)	4.29% (3.37–5.27)	5.38% (4.26–6.52)	4.82% (3.92–5.82)	2.68% (2.12–3.30)	3.17% (2.54–3.87)	5.30% (4.35–6.35)	3.50% (2.76–4.31)	4.30% (3.44–5.22)
65–69 years	8.99% (7.47–10.62)	6.27% (5.09–7.66)	8.02% (6.59–9.65)	7.3% (6.05–8.66)	3.81% (3.1–4.65)	4.64% (3.81–5.62)	8.19% (6.8–9.73)	5.08% (4.13–6.19)	6.4% (5.24–7.72)
70–74 years	13.38% (10.70–16.30)	8.77% (6.82–10.89)	11.32% (8.95–13.89)	10.28% (8.26–12.49)	5.23% (4.08–6.49)	6.59% (5.23–8.06)	11.93% (9.56–14.54)	7.07% (5.50–8.78)	9.09% (7.21–11.15)
75–79 years	17.64% (14.58–21.1)	11.38% (9.14–13.79)	14.64% (11.88–17.66)	12.96% (10.67–15.41)	6.77% (5.47–8.21)	8.58% (6.98–10.29)	15.55% (12.84–18.60)	9.27% (7.45–11.27)	11.91% (9.67–14.37)
80–84 years	21.55% (18.08–25.55)	14.01% (11.48–17.02)	18.03% (15.01–21.63)	15.38% (12.96–18.30)	8.37% (6.84–10.27)	10.56% (8.78–12.76)	19.00% (16.03–22.55)	11.59% (9.51–14.10)	14.91% (12.41–17.87)
85–89 years	24.60% (20.81–29.02)	15.82% (13.08–18.84)	20.83% (17.44–24.73)	17.32% (14.67–20.36)	9.84% (8.13–11.77)	12.72% (10.69–15.05)	21.93% (18.56–25.80)	13.29% (11.02–15.85)	17.79% (14.90–21.12)
90–94 years	26.80% (22.94–31.05)	17.38% (14.58–20.58)	23.24% (19.78–27.13)	18.91% (16.21–21.95)	11.21% (9.21–13.40)	15.16% (12.80–17.76)	24.36% (20.89–28.19)	14.84% (12.36–17.60)	20.70% (17.58–24.18)

UI=uncertainty interval. HIC=high-income country. LMIC=lower-middle-income country.

**Table: Estimated age-specific prevalence of peripheral artery disease, by sex and overall, in HICs, LMICs, and globally, 2019**

deaths per 100 000 population [95% UI 0.7–2.8] in the high SDI quintile and 1.4 per 100 000 population [0.7–2.4] in the high-middle SDI quintile in 2019) and the middle and low-middle SDI quintiles having the lowest rates (0.4 peripheral artery disease deaths per 100 000 population [0.3–0.5] for both middle and low-middle quintiles in 2019). However, the low SDI quintile was in the middle, with DALY and mortality rates higher than the low-middle and middle quintiles and lower than the high and high-middle quintiles (0.7 peripheral artery disease deaths per 100 000 population [0.4–1.0] in 2019; appendix pp 164–175). This trend was replicated with the analysis using the World Bank income level; prevalence and incidence rates of peripheral artery disease increased stepwise with increasing income level, whereas DALY and mortality rates of peripheral artery disease were U-shaped by income level (figure 4).

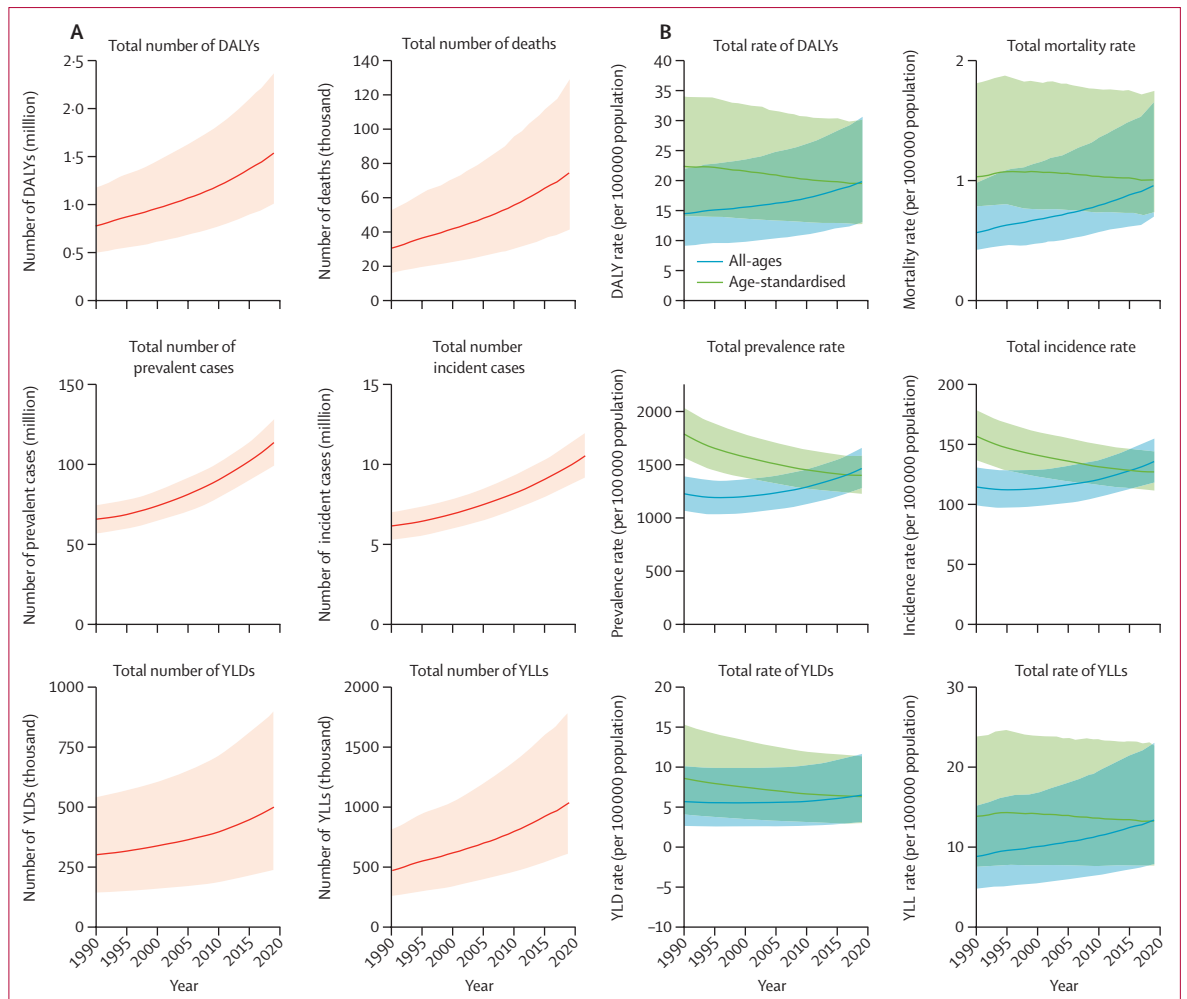
### Risk factors

The total number of peripheral artery disease DALYs globally attributable to all estimated risk factors in 2019 was 1.066 million (95% UI 0.690–1.646) for both sexes combined, which accounted for 69.4% (95% UI 64.2–74.3) of all peripheral artery disease DALYs. Males were estimated to have 0.589 million (0.333–1.072) peripheral artery disease DALYs attributable to risk factors, or 76.9% (72.7–80.4) of all peripheral artery

disease DALYs in males, whereas females were estimated to have 0.477 million (0.285–0.760) peripheral artery disease DALYs attributable to risk factors, or 62.0% (57.0–67.0) of all peripheral artery disease DALYs in females. In males, the age-standardised DALY rate for peripheral artery disease attributed to smoking was 9.5 (5.1–17.2), to high fasting plasma glucose was 6.4 (3.5–12.0), to high blood pressure was 5.9 (3.2–10.8), to kidney dysfunction was 3.6 (1.9–6.8), to high sodium was 0.9 (0.2–2.4), and to lead was 0.3 (0.2–0.6; figure 5; appendix p 218). In females, the age-standardised DALY rate for peripheral artery disease attributed to smoking was 3.1 (1.7–5.4), to high fasting plasma glucose was 4.6 (2.7–7.6), to high blood pressure was 4.8 (2.7–8.3), to kidney dysfunction was 2.7 (1.5–4.4), to high sodium was 0.5 (0.1–1.5), and to lead was 0.2 (0.1–0.4; figure 5).

### Discussion

We assessed the global burden of peripheral artery disease using estimates from GBD 2019. The total number of people with peripheral artery disease has increased from 1990 to 2019, which is likely to be due to population growth and ageing, considering that age-standardised rates have not increased. Indeed, age-standardised estimates for peripheral artery disease were stable or decreased, depending on summary measures, possibly indicating better prevention and management of peripheral artery disease over time. Modifiable risk



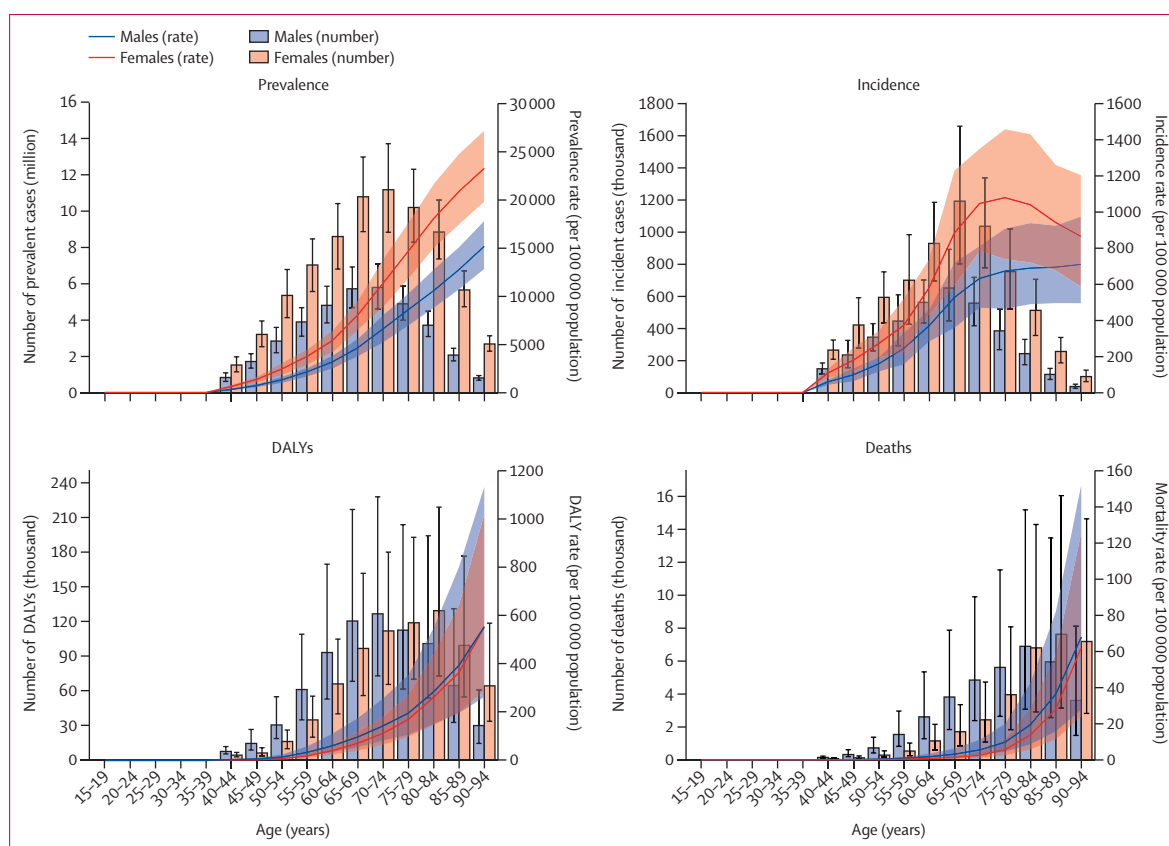
**Figure 2: Total numbers and rates of peripheral artery disease, 1990–2019**

(A) Total number of DALYs, deaths, prevalent cases, incident cases, YLDs, and YLLs of peripheral artery disease at the global level. (B) Rates (per 100 000 population) of age-standardised and all-age DALYs, deaths, prevalent cases, incident cases, YLDs, and YLLs of peripheral artery disease at the global level. Shaded regions indicate 95% uncertainty intervals. DALY=disability-adjusted life-year. YLD=year lived with disability. YLL=year of life lost.

factors were responsible for around 70% of the global peripheral artery disease burden, which highlights the extent to which public health measures could mitigate the burden of peripheral artery disease by modifying risk factors. Increased SDI was associated with an increased burden of peripheral artery disease, probably due to greater metabolic pressures (ie, high blood pressure and plasma glucose) in high-income nations (appendix p 139).

In 2019, the global prevalence of peripheral artery disease was 14·91% (95% UI 12·41–17·87) in those aged 80–84 years, and the prevalence diverged by sex (18·03% [15·01–21·63] in females and 10·56% [8·78–12·76] in males). Our estimated prevalence of peripheral artery disease in this age group was similar to the latest systematic reviews by the Global Peripheral Artery Disease Study,<sup>10</sup> in which they reported a global peripheral artery disease prevalence of 15·69% at age

80–84 years. Moreover, we replicated the findings of previous studies<sup>9,10</sup> in that the prevalence of peripheral artery disease was higher in females than males, particularly in low-income and middle-income regions. Low pain threshold, more common leg symptoms,<sup>22,23</sup> and a greater tendency to seek medical care in women<sup>24</sup> compared with men might have facilitated a higher prevalence in women. Sex hormone mechanisms in cardiovascular diseases and atherosclerosis could be another reason.<sup>25–27</sup> Menopause is associated with an increased risk of peripheral artery disease,<sup>28</sup> and it could partially explain a gradual increase in the difference in prevalence between sex after menopausal age. The paradoxical situation of peripheral artery disease being more prevalent in females, despite the higher prevalence of major risk factors (ie, smoking, hypertension, diabetes) in males, has been a longstanding question.<sup>10,29</sup> Our study showed that despite the higher prevalence in females,



**Figure 3: Numbers and age-standardised rates (per 100 000 population) of prevalence, incidence, DALYs, and deaths from peripheral artery disease at the global level by age group and sex, 2019**

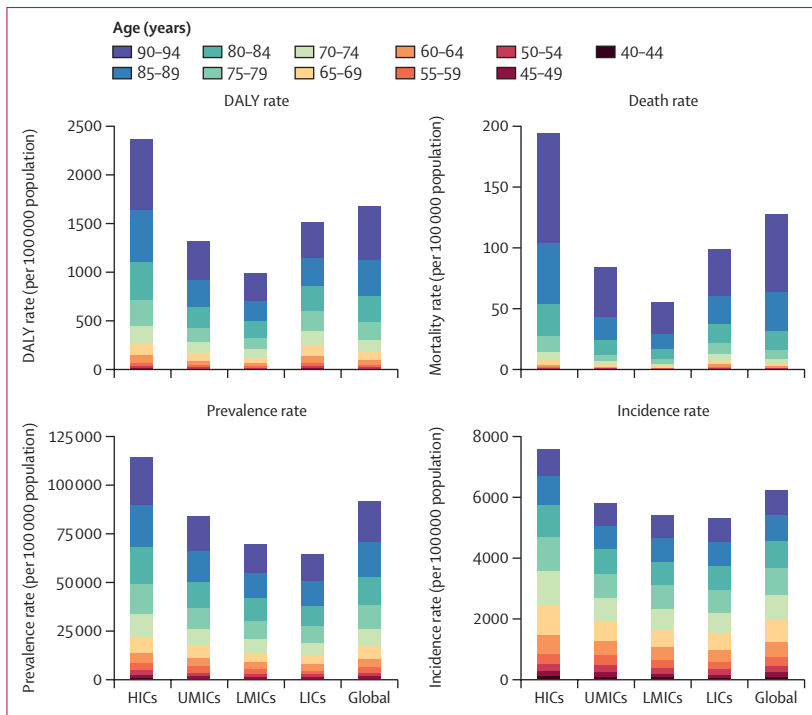
Error bars and shaded regions indicate 95% uncertainty intervals. DALY=disability-adjusted life-year.

the overall peripheral artery disease burden measured by DALYs was similar in both sexes, and the total DALYs attributable to modifiable risk factors was actually higher in males than females (76.9% [95% UI 72.7–80.4] vs 62.0% [57.0–67.0]). These data suggest that males experience more disability due to peripheral artery disease than females, which could be attributed to diagnosis of peripheral artery disease at more advanced stages or greater risk of complications. These observations indicate that a disproportionate burden is placed on males and equivalent attention and gender-specific care for peripheral artery disease is warranted.

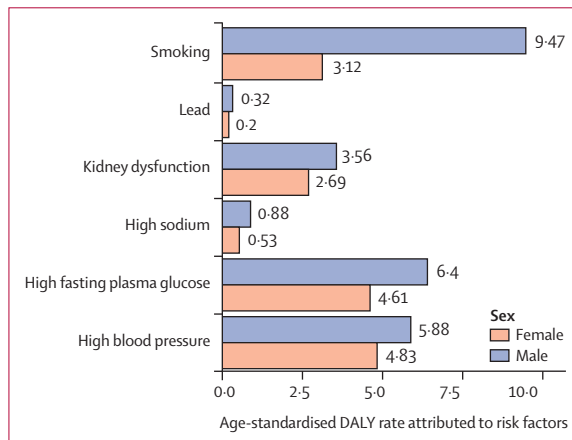
Atherosclerotic diseases have been traditionally thought to be diseases of wealthy countries, consistent with the concept of epidemiological transition; however, the burden of cardiovascular disease has been rapidly increasing in many low-income and middle-income countries, which can be explained in part by changes in lifestyle and environment due to development and urbanisation.<sup>8,30,31</sup> In our study, age-standardised prevalence rates of peripheral artery disease were increased stepwise with higher SDI and World Bank income levels. By contrast, DALY and mortality rates of peripheral artery disease showed U-shape patterns,

wherein countries with the highest SDI and income levels reported the highest DALY and mortality rates, countries with the middle SDI and income levels reported the lowest DALY and mortality rates, and the countries with the lowest SDI and income level had moderate values. This pattern might suggest that countries with low SDI and income had a disease burden that was disproportionate to prevalence, implying that peripheral artery disease burden has not been adequately managed in these countries. Considering the lower prevalence of peripheral artery disease in low-SDI and low-income countries, mild or asymptomatic peripheral artery disease might simply be underdiagnosed due to lack of resources;<sup>32</sup> furthermore, factors associated with low socio-developmental status, such as insufficient access to care, lack of quality in care, and conditions that are suboptimal for lifestyle modifications, might have facilitated worse disease burden and mortality. Therefore, prevention, early diagnosis, and apt management of peripheral artery disease in low-resource settings must be highlighted in the global community, and system-level disparities in managing cardiovascular risk factors should be explored.

Several strengths and novel aspects of this study should be highlighted. First, this study provided estimates of



**Figure 4:** DALYs, mortality, prevalence, and incidence rates (per 100 000 persons) of peripheral artery disease for both sexes at the World Bank income level, by age group, 2019  
 DALY=disability-adjusted life-year. HIC=high-income country. UMIC=upper-middle-income country. LMIC=lower-middle-income country. LIC=low-income country.



**Figure 5:** Age-standardised DALYs rate (per 100 000 persons) of peripheral artery disease attributed to risk factors in 2019

peripheral artery disease from diverse health metrics. Previous global estimate studies by Fowkes and colleagues<sup>9</sup> and Song and colleagues<sup>10</sup> assessed only the global prevalence of peripheral artery disease, whereas this study presented prevalence, cause-specific mortality, and DALYs. Because peripheral artery disease can result in lifelong disability, cross-sectional prevalence might not provide a complete picture of the disease burden. DALYs are a more appropriate health measure for peripheral artery disease, because they express the

number of years lost due to ill health, disability, or early death, and are commonly used to quantify the impact of diseases or health conditions on a population.<sup>11</sup> Second, by integrating the DALY metric, we were able to estimate the disease burden of peripheral artery disease attributable to risk factors using an approach demonstrated previously.<sup>33</sup> Our analysis showed that approximately 69% of the peripheral artery disease burden could be avoided by making modifications to these risk factors. This approach offered a unique perspective on associations between risk factors and peripheral artery disease from previous global peripheral artery disease studies<sup>9,10</sup> that have provided only odds ratios for the risk of peripheral artery disease with a given risk factor. Absolute risk more often represents the actual burden and enriches decision-making compared with relative risk.<sup>34</sup> Third, we used search strategies to obtain as much prevalence data of peripheral artery disease as possible, while ensuring data quality and comparability. To this end, we included only studies that confirmed the presence of peripheral artery disease based on an ABI value of less than or equal to 0.9, regardless of intermittent claudication, complying with the strategies used in previous studies.<sup>9,10</sup> From clinical and public-health perspectives, this approach is meaningful because asymptomatic peripheral artery disease is also associated with an increased risk of cardiovascular morbidity and mortality,<sup>10,35</sup> and such potential burdens deserve attention and action. Of note, ABI could be falsely elevated in a subset of patients, such as those with diabetes, and the values should be interpreted with caution.<sup>36</sup>

Although it benefits from a global dataset with country-level and region-level data, the present study has several limitations. First, this study includes the inherent limitations of the GBD dataset, mainly the data missingness and low availability and quality of data in some regions. For these data-sparse regions, descriptive statistics had to rely on predictive modelling using covariates, and inferences might not be as accurate as for other regions.<sup>11</sup> Second, this was an ecological study based on country-level aggregate data; associations with SDI and income might not reflect individual patient-level associations. Third, this analysis could have underestimated the prevalence of peripheral artery disease burden due to under-ascertainment because some proportion of the population might not have sought medical care or could have escaped the epidemiological assessment, especially in low-resource settings. Fourth, our analysis incorporated six specific risk factors and could not account for some emerging risk factors, such as lipoprotein levels. This limitation arose primarily from insufficient risk exposure data to generate accurate estimates. However, the risk-outcome pair matrix is constantly being updated to reflect changes in the available scientific evidence, and our future iterations of the peripheral artery disease GBD study will



include more risk factors. The interactions between risk factors and their impact on peripheral artery disease burden should also be explored in future iterations. Fifth, our estimates for the burden of peripheral artery disease could be underestimated because we might not have fully captured the burden of acute limb ischaemia and chronic limb-threatening ischaemia.<sup>37</sup> Nevertheless, the global estimate of 113 million peripheral artery disease cases is already a large burden, and understanding its contribution at global, regional, and national levels is a current research priority.<sup>11</sup> Future studies would benefit from including acute limb ischaemia and chronic limb-threatening ischaemia for a more comprehensive landscape of global peripheral artery disease burden. Lastly, although ethnicity could be an important factor to consider, we did not include it because the main goal of the GBD study is to provide descriptive estimates by geographic location.

Total prevalence, mortality, and DALYs of peripheral artery disease have increased worldwide from 1990 to 2019 while their age-standardised rates have decreased, which is likely to reflect a transition in population structure (ie, population growth and ageing). The evidence from this GBD study indicates that a substantial proportion of the global peripheral artery disease burden could be prevented through collective efforts to address modifiable risk factors.

#### GBD 2019 PAD Collaborators

Min Seo Kim\*, Jimin Hwang\*, Dong Keon Yon\*, Seung Won Lee\*, Se Yong Jung, Seoyeon Park, Catherine Owens Johnson, Benjamin A Stark, Christian Razo, Mohammadreza Abbasian, Hedayat Abbastabar, Amir Parsa Abhari, Victor Aboyans, Denberu Eshetie Adane Adane, Oladimeji M Adebayo, Fares Alahdab, Sami Almustanyir, Hany Aly, Edward Kwabena Ameyaw, Jason A Anderson, Catalina Liliana Andrei, Zahra Aryan, Avinash Aujayeb, Sara Bagherieh, Ovidiu Constantin Baltatu, Maciej Banach, Nebiyow Simegnaw Bayileyeegn, Lindsay M Bearne, Amir Hossein Behnoush, Isabela M Bensenor, Sonu Bhaskar, Ajay Nagesh Bhat, Vivek Bhat, Boris Bikbov, Bagas Suryo Bintoro, Katrin Burkart, Luis Alberto Cámera, Alberico L Catapano, Eeshwar K Chandrasekar, Jaykaran Charan, Vijay Kumar Chattu, Gerald Chi, Isaac Sunday Chukwu, Sheng-Chia Chung, Massimo Cirillo, Kaleb Coberly, Vera Marisa Costa, Omid Dadras, Xiaochen Dai, Thanh Chi Do, Rajkumar Doshi, Michael Ekholuenetale, Islam Y Elgendy, Muhammed Elhadi, Adeniyi Francis Fagbamigbe, Alireza Feizkhah, Ginenus Fekadu, Paramjit Singh Gill, Mohamad Goldust, Mahaveer Golechha, Shi-Yang Guan, Vivek Kumar Gupta, Mostafa Hadei, Najah R Hadi, Ahmad Hammoud, Graeme J Hankey, Netanja I Harlianto, Ahmed I Hasaballah, Shoaib Hassan, Mohammed Bheser Hassen, Golnaz Heidari, Mihaela Hostiuc, Olayinka Stephen Ilesanmi, Masao Iwagami, Mohammad Jokar, Jost B Jonas, Charity Ehimwenma Joshua, Jacek Jerzy Jozwiak, Sina Kazemian, Mohammad Keykhaei, Amirmohammad Khalaji, Moien AB Khan, Sorour Khateri, Biruk Getahun Kibret, Oleksii Korzh, Sindhura Lakshmi Koulmane Laxminarayana, Kewal Krishan, Akshay Kumar, Manoj Kumar, Ambily Kuttikkattu, Tri Laksono, Bagher Larjani, Thao Thi Thu Le, Stephen S Lim, Xuefeng Liu, Stefan Lorkowski, Hassan Magdy Abd El Razeq, Kashish Malhotra, Yosef Manla, Andrea Mauerer, Alexios-Fotios A Mentis, Tomislav Mestrovic, Ana Carolina Micheletti Gomide Nogueira de Sá, Andreea Mirica, Erkin M Mirrakhimov, Awoke Misganaw, Manish Mishra, Yousef Mohammad, Ali H Mokdad, Mohammad Ali Moni, Ahmed Al Montasir, Yousef Moradi,

Paula Moraga, Negar Morovatdar, Seyed Ali Mousavi-Aghdas, Christopher J L Murray, Mohsen Naghavi, Tapas Sadasivan Nair, Hasan Nassereldine, Zuhair S Natto, Dang H Nguyen, Hien Quang Nguyen, Van Thanh Nguyen, Jean Jacques Noubiap, Bogdan Oancea, Gláucia Maria Moraes Oliveira, Mayowa O Owolabi, Alicia Padron-Monedero, Norberto Perico, Ionela-Roxana Petcu, Amir Radfar, Quinn Rafferty, Mosiur Rahman, Muhammad Aziz Rahman, Pradhun Ram, Sina Rashedi, Ahmed Mustafa Rashid, Salman Rawaf, Giuseppe Remuzzi, Andre M N Renzaho, Malihe Rezaee, Leonardo Roeber, Aly M A Saad, Seyedmohammad Saadatagah, Masoumeh Sadeghi, Amirhossein Sahebkar, Mohamed A Saleh, Abdallah M Samy, Milena M Santric-Milicevic, Sadaf G Sepanlou, Allen Seylani, Sadaf Sharfaei, Seyed Afshin Shorofi, Jasvinder A Singh, Paramdeep Singh, Michael Spartalis, Johan Sundström, Ker-Kan Tan, Masayuki Teramoto, Samar Tharwat, Stefanos Tyrovolas, Sahel Valadan Tahbaz, Jef Van den Eynde, Priya Vart, Cong Wang, Fang Wang, Ronny Westerman, Juan Xia, Suowen Xu, Dereje Y Yada, Kazumasa Yamagishi, Naohiro Yonemoto, Mazyar Zahir, Moein Zangiabadian, Armin Zarrintan, Mikhail Sergeevich Zastrozhin, Anasthasia Zastrozhina, Mohammad Zoladl, Simon I Hay, Jae Il Shin, and Gregory A Roth. \*Co-first authors.

#### Affiliations

Cardiovascular Disease Initiative, Broad Institute of MIT and Harvard, Cambridge, MA, USA (M S Kim MD); Department of Epidemiology, Johns Hopkins University, Baltimore, MD, USA (J Hwang MD); Department of Pediatrics, Kyung Hee University, Seoul, South Korea (Prof D K Yon MD); Department of Precision Medicine, Sungkyunkwan University, Suwon-si, South Korea (Prof S W Lee MD); Department of Pediatrics, Yonsei University College of Medicine, Seoul, South Korea (S Y Jung MD, Prof J I Shin MD); Yonsei University College of Medicine, Yonsei University, Seodaemun-gu, South Korea (S Park MD); Institute for Health Metrics and Evaluation (C O Johnson PhD, B A Stark MA, C Razo PhD, J A Anderson BS, K Burkart PhD, K Coberly BS, X Dai PhD, M B Hassen BSc, Prof S S Lim PhD, T Mestrovic PhD, A H Mokdad PhD, Prof C J L Murray DPhil, Prof M Naghavi PhD, H Nassereldine MD, Q Rafferty BA, D Y Yada MSc, Prof S I Hay FMedSci, G A Roth MD), Department of Health Metrics Sciences, School of Medicine (K Burkart, X Dai, Prof S S Lim, A Misganaw PhD, A H Mokdad, Prof C J L Murray, Prof M Naghavi, Prof S I Hay, G A Roth), Division of Cardiology (G A Roth), University of Washington, Seattle, WA, USA; Department of Orthopedic Surgery (M Abbasian MD), Brigham and Women's Hospital (Z Aryan MD), Division of Cardiovascular Medicine (G Chi MD, I Y Elgendy MD), Department of Health Policy and Oral Epidemiology (Z S Natto DrPH), and Beth Israel Deaconess Medical Center (S Sharfaei MD), Harvard University, Boston, MA, USA; Department of Orthopaedic Surgery (M Abbasian), Pharmacology Department (M Rezaee MD), Urology and Nephrology Research Center (M Zahir MD), School of Medicine (M Zangiabadian MD), Shahid Beheshti University of Medical Sciences, Tehran, Iran; Advanced Diagnostic and Interventional Radiology Research Center (H Abbastabar PhD), Non-Communicable Diseases Research Center (Z Aryan, A H Behnoush BS, M Keykhaei MD), School of Medicine (A H Behnoush, A Khalaji BS), Institute for Environmental Research (M Hadei PhD), Cardiac Primary Prevention Research Center (S Kazemian MD), Tehran Heart Center (S Kazemian, M Rezaee), Students' Scientific Research Center (M Keykhaei), Endocrinology and Metabolism Research Institute (Prof B Larjani FACE), Department of Cardiology (S Rashedi MD), Digestive Diseases Research Institute (S G Sepanlou MD), Tehran University of Medical Sciences, Tehran, Iran; School of Medicine (A P Abhari MD, S Bagherieh BSc), Cardiac Rehabilitation Research Center (Prof M Sadeghi MD), Isfahan University of Medical Sciences, Isfahan, Iran; Department of Cardiology, Dupuytren University Hospital, Limoges, France (Prof V Aboyans MD); University of Limoges, Limoges, France (Prof V Aboyans); Department of Anesthesia and Critical Care, Debre Tabor University, Debre Tabor, Ethiopia (D E A Adane MSc); College of Medicine (O M Adebayo MD), Department of Community Medicine (O S Ilesanmi PhD), Department of Medicine (Prof M O Owolabi DrM), University College Hospital, Ibadan, Nigeria; Evidence-Based Practice Center (F Alahdab MSc),

Department of Cardiovascular Medicine (S Saadatagah MD), Mayo Clinic Foundation for Medical Education and Research, Rochester, MN, USA; College of Medicine, Alfaisal University, Riyadh, Saudi Arabia (S Almustanyir MD); Ministry of Health, Riyadh, Saudi Arabia (S Almustanyir); Department of Pediatrics (Prof H Aly MD), Lerner Research Institute (X Liu PhD), Cleveland Clinic, Cleveland, OH, USA; School of Graduate Studies, Lingnan University, Hong Kong, China (E K Ameyaw MPhil); Cardiology Department (C L Andrei PhD), Internal Medicine Department (M Hostiuic PhD), Carol Davila University of Medicine and Pharmacy, Bucharest, Romania; Northumbria HealthCare National Health Service (NHS) Foundation Trust, NHS Scotland, Newcastle upon Tyne, UK (A Aujayeb MBBS); Department of Pharmacology and Therapeutics, Khalifa University, Abu Dhabi, United Arab Emirates (Prof O C Baltatu PhD); Center of Innovation, Technology and Education, Anhembi Morumbi University, Sao Jose dos Campos, Brazil (Prof O C Baltatu); Department of Hypertension, Medical University of Lodz, Lodz, Poland (Prof M Banach PhD); Polish Mothers' Memorial Hospital Research Institute, Lodz, Poland (Prof M Banach); Department of Surgery, Jimma University, Jimma, Ethiopia (N S Bayileegn MD); Population Health Research Institute, University of London, London, UK (Prof L M Bearn PhD); Centre for Engagement and Dissemination, National Institute for Health Research, Twickenham, UK (Prof L M Bearn); Department of Internal Medicine, University of São Paulo, São Paulo, Brazil (I M Bensenor PhD); Global Health Neurology Lab, NSW Brain Clot Bank, Sydney, NSW, Australia (S Bhaskar PhD); Department of Neurology and Neurophysiology, South West Sydney Local Health District and Liverpool Hospital, Sydney, NSW, Australia (S Bhaskar); Department of General Medicine, Manipal Academy of Higher Education, Mangalore, India (A N Bhat MD); Department of Internal Medicine, St John's National Academy of Health Sciences, Bangalore, India (V Bhat MBBS); Scientific-Tools.Org, Bergamo, Italy (B Bikbow MD); Department of Health Behaviour (B S Bintoro MD), Center of Health and Behavior and Promotion (B S Bintoro), Universitas Gadjah Mada (Gadjah Mada University), Sleman, Indonesia; Internal Medicine Department, Hospital Italiano de Buenos Aires (Italian Hospital of Buenos Aires), Buenos Aires, Argentina (Prof L A Cámara MD); Board of Directors, Argentine Society of Medicine, Buenos Aires, Argentina (Prof L A Cámara); Department of Pharmacological and Biomolecular Sciences, University of Milan, Milan, Italy (Prof A L Catapano PhD); MultiMedica, Istituto di Ricovero e Cura a Carattere Scientifico (IRCCS), Sesto S Giovanni, Italy (Prof A L Catapano); Department of Anesthesiology and Perioperative Medicine (E K Chandrasekar MD), Department of Medicine (Prof S Xu PhD), University of Rochester, Rochester, NY, USA; Department of Pharmacology, All India Institute of Medical Sciences, Jodhpur, India (J Charan MD); Temerty Faculty of Medicine, University of Toronto, Toronto, ON, Canada (V K Chattu MD); Saveetha Dental College, SIMATS, Saveetha University, Chennai, India (V K Chattu); Department of Paediatric Surgery, Federal Medical Centre, Umuahia, Nigeria (I S Chukwu BMedSc); Department of Health Informatics, University College London, London, UK (S-C Chung PhD); Health Data Research UK, London, UK (S-C Chung); Scuola Medica Salernitana, University of Salerno, Baronissi, Italy (Prof M Cirillo MD); Research Unit on Applied Molecular Biosciences (UCIBIO), University of Porto, Porto, Portugal (V M Costa PhD); Section Global Health and Rehabilitation, Western Norway University of Applied Sciences, Bergen, Norway (O Dadras DrPH); Department of Global Public Health and Primary Care (O Dadras), Center for International Health (S Hassan MPhil), Bergen Center for Ethics and Priority Setting (S Hassan), University of Bergen, Bergen, Norway; Department of Medicine, Pham Ngoc Thach University of Medicine, Ho Chi Minh City, Viet Nam (T C Do MD); Department of Cardiology, St Joseph's University Medical Center, Paterson, NJ, USA (R Doshi MD); Department of Epidemiology and Medical Statistics (M Ekholuenetale MSc, A F Fagbamigbe PhD), Faculty of Public Health (M Ekholuenetale), Department of Community Medicine (O S Ilesanmi), Department of Medicine (Prof M O Owolabi), University of Ibadan, Ibadan, Nigeria; Division of Cardiology, Massachusetts General Hospital, Boston, MA, USA (I Y Elgendy, D H Nguyen BS); Faculty of Medicine, University of Tripoli, Tripoli, Libya (M Elhadi MD); Institute of Applied Health Sciences, University of Aberdeen, Aberdeen, UK (A F Fagbamigbe); Department of Social Medicine and Epidemiology, Guilan University of Medical Sciences, Rasht, Iran (A Feizkhah MD); School of Pharmacy, The Chinese University of Hong Kong, Hong Kong, China (G Fekadu MSc); Department of Pharmacy, Wollega University, Nekemte, Ethiopia (G Fekadu); Warwick Medical School, University of Warwick, Coventry, UK (Prof P S Gill DM); Department of Dermatology, Yale University, New Haven, CT, USA (M Goldust MD); Health Systems and Policy Research, Indian Institute of Public Health, Gandhinagar, India (M Golechha PhD); Department of Epidemiology and Biostatistics, Anhui Medical University, Hefei, China (S-Y Guan MD); Faculty of Medicine Health and Human Sciences, Macquarie University, Sydney, NSW, Australia (Prof V K Gupta PhD); Department of Clinical Pharmacology and Medicine, University of Kufa, Najaf, Iraq (Prof N R Hadi PhD); Department of Medical and Technical Information Technology, Bauman Moscow State Technical University, Moscow, Russia (A Hammoud MSc); Medical School, University of Western Australia, Perth, WA, Australia (Prof G J Hankey MD); Perron Institute for Neurological and Translational Science, Perth, WA, Australia (Prof G J Hankey); Faculty of Medicine, Utrecht University, Utrecht, Netherlands (N I Harlianto BSc); Department of Radiology, University Medical Center Utrecht, Utrecht, Netherlands (N I Harlianto); Department of Zoology and Entomology, Al Azhar University, Cairo, Egypt (A I Hasaballah PhD); National Data Management Center for Health (NDMC), Ethiopian Public Health Institute, Addis Ababa, Ethiopia (M B Hassen, A Misganaw); Independent Consultant, Santa Clara, CA, USA (G Heidari MD); Research and Development Center for Health Services, University of Tsukuba, Tsukuba, Japan (M Iwagami PhD, Prof K Yamagishi MD); Department of Non-Communicable Disease Epidemiology, London School of Hygiene & Tropical Medicine, London, UK (M Iwagami); Zoonoses Research Center (M Joker DVM), Department of Microbiology (S Valadan Tahbaz PhD), Islamic Azad University, Tehran, Iran; Department of Clinical Sciences, Jahrom University of Medical Sciences, Jahrom and Shiraz, Iran (M Joker); Institute of Molecular and Clinical Ophthalmology Basel, Basel, Switzerland (Prof J B Jonas MD); Department of Ophthalmology, Heidelberg University, Mannheim, Germany (Prof J B Jonas); Department of Economics, National Open University, Benin City, Nigeria (C E Joshua BSc); Department of Family Medicine and Public Health, University of Opole, Opole, Poland (J J Jozwiak PhD); Department of Epidemiology (S Rashedi), Non-Communicable Diseases Research Center (A Khalaji), Tehran, Iran; Family Medicine Department, United Arab Emirates University, Al Ain, United Arab Emirates (M A B Khan MSc); Primary Care Department, NHS North West London, London, UK (M A B Khan); School of Medicine, Kurdistan University of Medical Sciences, Sanandaj, Iran (S Khateri MD); Department of Medical Physiology, Bahir Dar University, Bahir Dar, Ethiopia (B G Kibret MSc); Department of General Practice-Family Medicine, Kharkiv National Medical University, Kharkiv, Ukraine (Prof O Korzh DSc); Kasturba Medical College, Udupi, India (S L Koulmane Laxminarayana MD); Department of Anthropology, Panjab University, Chandigarh, India (Prof K Krishan PhD); Department of Cardiothoracic Surgery, UN Mehta Institute of Cardiology and Research Center, Ahmedabad, India (A Kumar MD); Department of Cardiothoracic Surgery, Medanta Hospital, Gurugram, India (A Kumar); Chemical and Biochemical Processing Division, ICAR-Central Institute for Research on Cotton Technology, Mumbai, India (M Kumar PhD); School of Public Health, Texila American University, Coimbatore, India (M Kumar PhD); Department of Nephrology, Pushpagiri Institute of Medical Sciences and Research Centre, Thiruvalla, India (A Kutikkattu MD); Department of Physiotherapy, Universitas Aisyiyah Yogyakarta, Yogyakarta, Indonesia (T Laksono MS); Institute of Allied Health Sciences, National Cheng Kung University, Tainan, Taiwan (T Laksono); Department of General Medicine (V T Nguyen MD), University of Medicine and Pharmacy at Ho Chi Minh City, Ho Chi Minh City, Viet Nam (T T Le MD); Department of Quantitative Health Science, Case Western Reserve University, Cleveland, OH, USA (X Liu); Institute of Nutritional Sciences, Friedrich Schiller University Jena, Jena, Germany (Prof S Lorkowski PhD); Competence Cluster for Nutrition and Cardiovascular Health (nutriCARD), Jena, Germany (Prof S Lorkowski); Mansoura Faculty of Medicine

(H Magdy Abd El Razek MD), Faculty of Pharmacy (M A Saleh PhD), Rheumatology and Immunology Unit (S Tharwat MD), Mansoura University, Mansoura, Egypt; Department of Internal Medicine, Dayanand Medical College and Hospital, Ludhiana, India (K Malhotra MBBS); Heart and Vascular Institute, Cleveland Clinic Abu Dhabi, Abu Dhabi, United Arab Emirates (Y Manla MD); Department of Medical, Surgical Sciences and Advanced Technologies “GF Ingrassia” (DGFI), University of Catania, Catania, Italy (A Maugeri PhD); International Dx Department, BGI Genomics, Copenhagen, Denmark (A-F A Mentis MD); University Centre Varazdin, University North, Varazdin, Croatia (T Mestrovic); Department of Maternal and Child Nursing and Public Health, Federal University of Minas Gerais, Belo Horizonte, Brazil (Prof A C Micheletti Gomide Nogueira de Sá MSc); Department of Statistics and Econometrics, Bucharest University of Economic Studies, Bucharest, Romania (A Mirica PhD, I-R Petcu PhD); Internal Medicine Programme, Kyrgyz State Medical Academy, Bishkek, Kyrgyzstan (Prof E M Mirrakhimov PhD); Department of Atherosclerosis and Coronary Heart Disease, National Center of Cardiology and Internal Disease, Bishkek, Kyrgyzstan (Prof E M Mirrakhimov); Department of Biomedical Sciences, Mercer University School of Medicine, Macon, GA, USA (M Mishra PhD); Internal Medicine Department, King Saud University, Riyadh, Saudi Arabia (Y Mohammad MD); School of Health and Rehabilitation Sciences, University of Queensland, Brisbane, QLD, Australia (M A Moni PhD); Department of Medicine, TMSS Medical College, Bogura, Bangladesh (A A Montasir FMD); Department of Medicine, Sofia Ismail Memorial Medical Centre, Bogura, Bangladesh (A A Montasir); Social Determinants of Health Research Center, Kurdistan University of Medical Sciences, Kurdistan, Iran (Y Moradi PhD); Computer, Electrical, and Mathematical Sciences and Engineering Division, King Abdullah University of Science and Technology, Thuwal, Saudi Arabia (P Moraga PhD); Clinical Research Development Unit (N Morovatdar MD), Applied Biomedical Research Center (A Sahebkar PhD), Biotechnology Research Center (A Sahebkar), Mashhad University of Medical Sciences, Mashhad, Iran; Tuberculosis and Lung Diseases Research Center (S A Mousavi-Aghdas MD), Department of Radiology (A Zarrintan MD), Tabriz University of Medical Sciences, Tabriz, Iran; Health Workforce Department, World Health Organization, Geneva, Switzerland (T S Nair MD); Department of Dental Public Health, King Abdulaziz University, Jeddah, Saudi Arabia (Z S Natto); Department of Medical Engineering, University of South Florida, Tampa, FL, USA (D H Nguyen); Cardiovascular Research Department, Methodist Hospital, Merrillville, IL, USA (H Q Nguyen MD); Centre for Heart Rhythm Disorders, University of Adelaide, Adelaide, SA, Australia (J J Noubiap MD); Department of Applied Economics and Quantitative Analysis, University of Bucharest, Bucharest, Romania (Prof B Oancea PhD); Cardiology Department, Federal University of Rio de Janeiro, Rio de Janeiro, Brazil (G M M Oliveira PhD); National School of Public Health, Institute of Health Carlos III, Madrid, Spain (A Padron-Monedero PhD); Mario Negri Institute for Pharmacological Research, Bergamo, Italy (N Perico MD, Prof G Remuzzi MD); College of Medicine, University of Central Florida, Orlando, FL, USA (A Radfar MD); Department of Population Science and Human Resource Development, University of Rajshahi, Rajshahi, Bangladesh (M Rahman DrPH); School of Nursing and Healthcare Professions, Federation University Australia, Berwick, VIC, Australia (M A Rahman PhD); School of Nursing and Midwifery, La Trobe University, Melbourne, VIC, Australia (M A Rahman); Department of Cardiology, Emory University, Atlanta, GA, USA (P Ram MD); Department of Medicine, Jinnah Sindh Medical University, Karachi, Pakistan (A M Rashid MD); Department of Primary Care and Public Health, Imperial College London, London, UK (Prof S Rawaf MD); Academic Public Health England, Public Health England, London, UK (Prof S Rawaf); School of Medicine (Prof A M N Renzaho PhD), Translational Health Research Institute (Prof A M N Renzaho), Western Sydney University, Campbelltown, NSW, Australia; Department of Clinical Research, Federal University of Uberlândia, Uberlândia, Brazil (L Roeber PhD); Cardiovascular Department, Zagazig University, Zagazig, Egypt (Prof A M A Saad MD); College of Medicine, University of Sharjah, Sharjah, United Arab Emirates (M A Saleh); Department of Entomology (A M Samy PhD), Medical Ain Shams Research Institute (MARSII) (A M Samy), Ain Shams

University, Cairo, Egypt; Faculty of Medicine (Prof M M Santric-Milicevic PhD), School of Public Health and Health Management (Prof M M Santric-Milicevic), University of Belgrade, Belgrade, Serbia; Non-Communicable Disease Research Center, Shiraz University of Medical Sciences, Shiraz, Iran (S G Sepanlou); National Heart, Lung, and Blood Institute, National Institutes of Health, Rockville, MD, USA (A Seylani BS); Department of Clinical Review and Safety, Baim Institute for Clinical Research, Boston, MA, USA (S Sharfaei); Department of Medical-Surgical Nursing, Mazandaran University of Medical Sciences, Sari, Iran (S A Shorofi PhD); Nursing and Health Sciences, Flinders University, Adelaide, SA, Australia (S A Shorofi); School of Medicine, University of Alabama at Birmingham, Birmingham, AL, USA (Prof J A Singh MD); Medicine Service, US Department of Veterans Affairs, Birmingham, AL, USA (Prof J A Singh); Department of Radiodiagnosis, All India Institute of Medical Sciences, Bathinda, India (P Singh MD); 3rd Department of Cardiology, University of Athens, Athens, Greece (M Spartalis PhD); Department of Medical Sciences, Uppsala University, Uppsala, Sweden (Prof J Sundström PhD); The George Institute for Global Health, Sydney, NSW, Australia (Prof J Sundström); Department of Surgery, National University of Singapore, Singapore (K-K Tan PhD); Department of Social Medicine, Osaka University, Osaka, Japan (M Teramoto MD); St John of God Health Park, San Juan de Dios Sanitary Park, Barcelona, Spain (S Tyrovolas PhD); Biomedical Research Networking Center for Mental Health Network (CiberSAM), Madrid, Spain (S Tyrovolas); Clinical Cancer Research Center, Milad General Hospital, Tehran, Iran (S Valadan Tahbaz); Department of Cardiovascular Sciences, Katholieke Universiteit Leuven (University of Leuven), Leuven, Belgium (J Van den Eynde BSc); Department of Internal Medicine, University of Groningen, Groningen, Netherlands (P Vart PhD); Brown School (C Wang MPH), Department of Surgery (C Wang), Washington University in St Louis, St Louis, MO, USA; School of Public Health, Xuzhou Medical University, Xuzhou, China (F Wang PhD); Competence Center of Mortality-Follow-Up of the German National Cohort, Federal Institute for Population Research, Wiesbaden, Germany (R Westerman DSc); School of Public Health, Capital Medical University, Beijing, China (J Xia PhD); Department of Endocrinology, University of Science and Technology of China, Hefei, China (Prof S Xu); Graduate School of Medicine, Osaka University, Suita, Japan (Prof K Yamagishi); Department of Neuropsychopharmacology, National Center of Neurology and Psychiatry, Kodaira, Japan (N Yonemoto PhD); Department of Public Health, Juntendo University, Tokyo, Japan (N Yonemoto); Department of Bioengineering and Therapeutic Sciences, University of California San Francisco, San Francisco, CA, USA (Prof M S Zastrozhin PhD); Addictology Department, Russian Medical Academy of Continuous Professional Education, Moscow, Russia (Prof M S Zastrozhin); Peoples' Friendship University of Russia, Moscow, Russia (A Zastrozhina PhD); Department of Nursing, Yasuj University of Medical Sciences, Yasuj, Iran (M Zoladl PhD).

#### Contributors

Detailed information about individual author contributions to the research is provided in the appendix (pp 339–41), divided into the following categories: providing data or critical feedback on data sources; developing methods or computational machinery; providing critical feedback on methods or results; drafting the manuscript or revising it critically for important intellectual content; and managing the estimation or publications process.

#### Declaration of interests

S W Lee reports support for the present manuscript from a National Research Foundation grant funded by the Ministry of Education, South Korea (NRF2021R111A2059735). S Bhaskar reports leadership or fiduciary roles in board, society, committee, or advocacy groups, paid or unpaid with Rotary District 9675 as a chair of Diversity, Equity, and Inclusion; the Rotary Club of Sydney as a board director and chair of Youth, Global Health and Migration; and the Global Health Hub Germany as a founding member and chair; all outside the submitted work. K Krishan reports other non-financial support from the UGC Centre of Advanced Study, CAS II, Department of Anthropology, Panjab University, Chandigarh, India; all outside the submitted work. S Lorkowski reports grants or contracts from Akcea Therapeutics

Germany; consulting fees from Danone, Novartis Pharma, Swedish Orphan Biovitrum, and Upfield; payment or honoraria for lectures, presentations, speakers bureaus, manuscript writing, or educational events from Akcea Therapeutics Germany, AMARIN Germany, Amedes Holding, Amgen, Berlin-Chemie, Boehringer Ingelheim Pharma, Daiichi Sankyo Deutschland, Danone, Hubert Burda Media Holding, Janssen-Cilag, Lilly Deutschland, Novartis Pharma, Novo Nordisk Pharma, Roche Pharma, Sanofi-Aventis, SYNLAB Holding Deutschland, and SYNLAB Akademie; support for attending meetings or travel from Amgen; participation on a data safety monitoring board or advisory board with Akcea Therapeutics Germany, Amgen, Daiichi Sankyo Deutschland, Novartis Pharma, and Sanofi-Aventis; all outside the submitted work. A-F A Mentis reports grants or contracts from MilkSafe (a novel pipeline to enrich formula milk using omics technologies), research co-financed by the European Regional Development Fund of the EU and Greek national funds through the Operational Program Competitiveness, Entrepreneurship and Innovation, under the call RESEARCH—CREATE—INNOVATE (project code T2EDK-02222), as well as from ELIDEK (Hellenic Foundation for Research and Innovation, MIMS-860); payment for expert testimony from serving as an external peer reviewer for Fondazione Cariplo, Italy; leadership or fiduciary roles in board, society, committee, or advocacy groups, paid or unpaid as an editorial board member for *Systemic Reviews and Annals of Epidemiology*, and as associate editor for *Translational Psychiatry*; stocks in a family winery; other financial or non-financial support from the BGI group as a scientific officer; outside the submitted work. A Radfar reports support for the present manuscript from Avicenna Medical and Clinical Research Institute. J A Singh reports consulting fees from Crealta/Horizon, Medisys, Fidia, PK Med, Two Labs, Adept Field Solutions, Clinical Care Options, Clearview Healthcare Partners, Putnam Associates, Focus Forward, Navigant Consulting, Spherix, MedIQ, Jupiter Life Science, UBM, Trio Health, Medscape, WebMD, and Practice Point Communications, and the National Institutes of Health and the American College of Rheumatology; payment or honoraria for lectures, presentations, speakers bureaus, manuscript writing, or educational events from the speakers bureau of Simply Speaking; support for attending meetings or travel from the steering committee of OMERACT; participation on a data safety monitoring board or advisory board as a member of the FDA Arthritis Advisory Committee; leadership or fiduciary roles in board, society, committee, or advocacy groups, paid or unpaid as a steering committee member of OMERACT, with the Veteran Affairs Rheumatology Field Advisory Committee as a chair, and with the UAB Cochrane Musculoskeletal Group Satellite Center on Network Meta-analysis as an editor; stock or stock options in Atai Life Sciences, Kintara Therapeutics, Intelligent Biosolutions, Acumen Pharmaceutical, TPT Global Tech, Vaxart Pharmaceuticals, Atyu Biopharma, Adaptimmune Therapeutics, GeoVax Labs, Pieris Pharmaceuticals, EnzoLytics, Seres Therapeutics, Tonix Pharmaceuticals and Charlotte's Web, and previously owned stock options in Amarin, Viking, and Moderna Pharmaceuticals; all outside the submitted work. J Sundström reports stock or stock options as a shareholder in Anagram Communication and Symptoms Europe, outside the submitted work. All other authors declare no competing interests.

#### Data sharing

This paper summarises key findings from our analysis of GBD 2019 estimates. All estimates are publicly available in our online tools (<http://ghdx.healthdata.org/gbd-2019>). Citations for the data used in this study can be accessed from the Global Health Data Exchange data input sources tool (<http://ghdx.healthdata.org/gbd-2019/data-input-sources>). Files containing all GBD 2019 estimates are available on the Global Health Data Exchange website (<http://ghdx.healthdata.org/gbd-2019>) and can also be downloaded from the Global Health Data Exchange results tool (<http://healthdata.org/gbd-results-tool>).

#### Acknowledgments

O C Baltatu acknowledges support from the National Council for Scientific and Technological Development (CNPq, 304224/2022-7) and the Anima Institute (research professor fellowship). A N Bhat acknowledges support from Kasturba Medical College of Mangalore, Manipal Academy of Higher Education. L A Cámara acknowledges support from Sociedad Argentina de Medicina and Hospital Italiano de

Buenos Aires. A L Catapano acknowledges support from the Italian Ministry of Health finanziamento ricerca corrente at Multimedita IRCCS. V M Costa acknowledges support from grant SFRH/BHD/110001/2015, received by Portuguese national funds through Fundação para a Ciência e a Tecnologia IP, under the Norma Transitória DL57/2016/CP1334/CT0006. V K Gupta acknowledges funding support from the National Health and Medical Research Council, Australia. S L Koulmane Laxminarayana acknowledges institutional support from Manipal Academy of Higher Education, Manipal. K Krishan acknowledges non-financial support from UGC Centre of Advanced Study, Phase II, awarded to the Department of Anthropology, Panjab University, Chandigarh, India, outside the submitted work. S Lorkowski acknowledges support from the German Federal Ministry of Education and Research (nutriCARD, grant agreement number 01EA1808A). K Malhotra acknowledges support from the Institute of Applied Health Research, University of Birmingham, UK. G A Roth acknowledges support from research grants from the National Heart, Lung, and Blood Institute (USA), the American Heart Association, the American College of Cardiology, the Cardiovascular Medical Research and Education Fund (USA), and the Bill & Melinda Gates Foundation. A M Samy acknowledges support from Ain Shams University and the Egyptian Fulbright Mission Program.

#### References

- Gerhard-Herman MD, Gornik HL, Barrett C, et al. 2016 AHA/ACC guideline on the management of patients with lower extremity peripheral artery disease: a report of the American College of Cardiology/American Heart Association Task Force on Clinical Practice Guidelines. *J Am Coll Cardiol* 2017; **69**: e71–126.
- Kullo IJ, Rooke TW. Clinical practice. Peripheral artery disease. *N Engl J Med* 2016; **374**: 861–71.
- Creager MA. A bon VOYAGER for peripheral artery disease. *N Engl J Med* 2020; **382**: 2047–48.
- Berger JS, Ladapo JA. Underuse of prevention and lifestyle counseling in patients with peripheral artery disease. *J Am Coll Cardiol* 2017; **69**: 2293–300.
- Fowkes FGR, Aboyans V, Fowkes FJ, McDermott MM, Sampson UK, Criqui MH. Peripheral artery disease: epidemiology and global perspectives. *Nat Rev Cardiol* 2017; **14**: 156–70.
- Criqui MH, Denenberg JO, Langer RD, Fronck A. The epidemiology of peripheral arterial disease: importance of identifying the population at risk. *Vasc Med* 1997; **2**: 221–26.
- Fowkes FG. Epidemiology of atherosclerotic arterial disease in the lower limbs. *Eur J Vasc Surg* 1988; **2**: 283–91.
- Yusuf S, Reddy S, Öunpuu S, Anand S. Global burden of cardiovascular diseases: part I: general considerations, the epidemiologic transition, risk factors, and impact of urbanization. *Circulation* 2001; **104**: 2746–53.
- Fowkes FGR, Rudan D, Rudan I, et al. Comparison of global estimates of prevalence and risk factors for peripheral artery disease in 2000 and 2010: a systematic review and analysis. *Lancet* 2013; **382**: 1329–40.
- Song P, Rudan D, Zhu Y, et al. Global, regional, and national prevalence and risk factors for peripheral artery disease in 2015: an updated systematic review and analysis. *Lancet Glob Health* 2019; **7**: e1020–30.
- Vos T, Lim SS, Abbafati C, et al. Global burden of 369 diseases and injuries in 204 countries and territories, 1990–2019: a systematic analysis for the Global Burden of Disease Study 2019. *Lancet* 2020; **396**: 1204–22.
- Dicker D, Nguyen G, Abate D, et al. Global, regional, and national age-sex-specific mortality and life expectancy, 1950–2017: a systematic analysis for the Global Burden of Disease Study 2017. *Lancet* 2018; **392**: 1684–735.
- Afshin A, Sur PJ, Fay KA, et al. Health effects of dietary risks in 195 countries, 1990–2017: a systematic analysis for the Global Burden of Disease Study 2017. *Lancet* 2019; **393**: 1958–72.
- James SL, Abate D, Abate KH, et al. Global, regional, and national incidence, prevalence, and years lived with disability for 354 diseases and injuries for 195 countries and territories, 1990–2017: a systematic analysis for the Global Burden of Disease Study 2017. *Lancet* 2018; **392**: 1789–858.

- 15 Roth GA, Abate D, Abate KH, et al. Global, regional, and national age-sex-specific mortality for 282 causes of death in 195 countries and territories, 1980–2017: a systematic analysis for the Global Burden of Disease Study 2017. *Lancet* 2018; **392**: 1736–88.
- 16 Foreman KJ, Lozano R, Lopez AD, Murray CJ. Modeling causes of death: an integrated approach using CODEm. *Popul Health Metr* 2012; **10**: 1–23.
- 17 Patel SK, Surowiec SM. Intermittent claudication. In: StatPearls. Treasure Island, FL: StatPearls Publishing, 2023.
- 18 Bikbov B, Purcell CA, Levey AS, et al. Global, regional, and national burden of chronic kidney disease, 1990–2017: a systematic analysis for the Global Burden of Disease Study 2017. *Lancet* 2020; **395**: 709–33.
- 19 Haile LM, Kamenov K, Briant PS, et al. Hearing loss prevalence and years lived with disability, 1990–2019: findings from the Global Burden of Disease Study 2019. *Lancet* 2021; **397**: 996–1009.
- 20 Degenhardt L, Charlson F, Ferrari A, et al. The global burden of disease attributable to alcohol and drug use in 195 countries and territories, 1990–2016: a systematic analysis for the Global Burden of Disease Study 2016. *Lancet Psychiatry* 2018; **5**: 987–1012.
- 21 Salomon JA, Haagsma JA, Davis A, et al. Disability weights for the Global Burden of Disease 2013 study. *Lancet Glob Health* 2015; **3**: e712–23.
- 22 Schramm K, Rochon PJ. Gender differences in peripheral vascular disease. *Semin Intervent Radiol* 2018; **35**: 9–16.
- 23 McDermott MM, Greenland P, Liu K, et al. Sex differences in peripheral arterial disease: leg symptoms and physical functioning. *J Am Geriatr Soc* 2003; **51**: 222–28.
- 24 Thompson AE, Anisimowicz Y, Miedema B, Hogg W, Wodchis WP, Aubrey-Bassler K. The influence of gender and other patient characteristics on health care-seeking behaviour: a QUALICOPC study. *BMC Fam Pract* 2016; **17**: 38.
- 25 Vogel B, Acevedo M, Appelman Y, et al. The *Lancet* women and cardiovascular disease Commission: reducing the global burden by 2030. *Lancet* 2021; **397**: 2385–438.
- 26 Zhao D, Guallar E, Ouyang P, et al. Endogenous sex hormones and incident cardiovascular disease in post-menopausal women. *J Am Coll Cardiol* 2018; **71**: 2555–66.
- 27 Man JJ, Beckman JA, Jaffe IZ. Sex as a biological variable in atherosclerosis. *Circ Res* 2020; **126**: 1297–319.
- 28 Honigberg MC, Zekavat SM, Aragam K, et al. Association of premature natural and surgical menopause with incident cardiovascular disease. *JAMA* 2019; **322**: 2411–21.
- 29 Murray CJ, Aravkin AY, Zheng P, et al. Global burden of 87 risk factors in 204 countries and territories, 1990–2019: a systematic analysis for the Global Burden of Disease Study 2019. *Lancet* 2020; **396**: 1223–49.
- 30 Omran AR. The epidemiologic transition. A theory of the epidemiology of population change. 1971. *Bull World Health Organ* 2001; **79**: 161–70.
- 31 Gaziano TA, Bitton A, Anand S, Abrahams-Gessel S, Murphy A. Growing epidemic of coronary heart disease in low- and middle-income countries. *Curr Probl Cardiol* 2010; **35**: 72–115.
- 32 Kengne AP, Echouffo-Tcheugui JB. Differential burden of peripheral artery disease. *Lancet Glob Health* 2019; **7**: e980–81.
- 33 Tran KB, Lang JJ, Compton K, et al. The global burden of cancer attributable to risk factors, 2010–19: a systematic analysis for the Global Burden of Disease Study 2019. *Lancet* 2022; **400**: 563–91.
- 34 Noordzij M, van Diepen M, Caskey FC, Jager KJ. Relative risk versus absolute risk: one cannot be interpreted without the other. *Nephrol Dial Transplant* 2017; **32** (suppl 2): ii13–18.
- 35 Golomb BA, Dang TT, Criqui MH. Peripheral arterial disease: morbidity and mortality implications. *Circulation* 2006; **114**: 688–99.
- 36 Potier L, Abi Khalil C, Mohammedi K, Roussel R. Use and utility of ankle brachial index in patients with diabetes. *Eur J Vasc Endovasc Surg* 2011; **41**: 110–16.
- 37 Hess CN, Huang Z, Patel MR, et al. Acute limb ischemia in peripheral artery disease. *Circulation* 2019; **140**: 556–65.