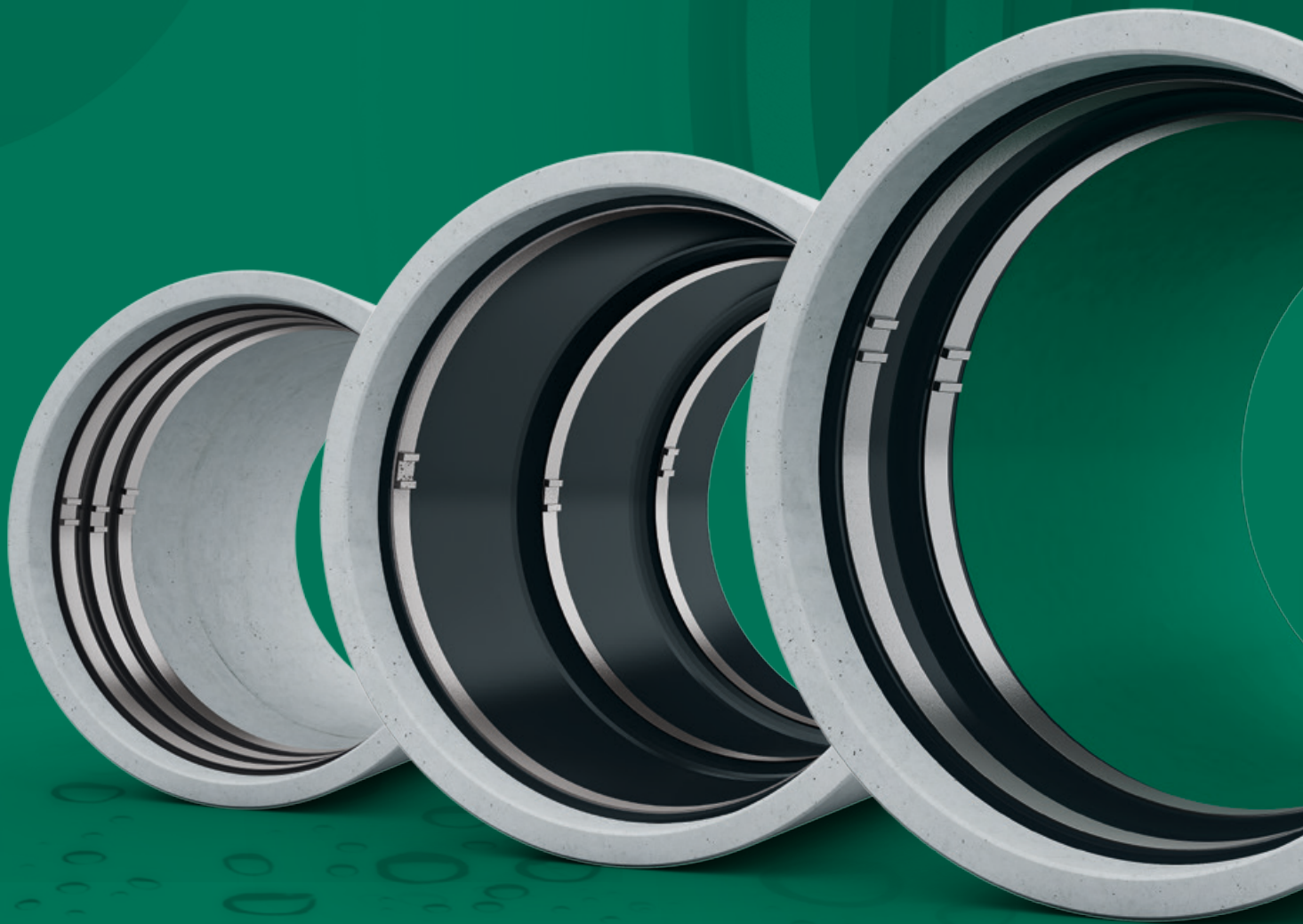


AMEX, the internal Sealing System for accessible Pipes.

—
Company & Products



AMEX[®]

Table of Contents.

AMEX
The Company

02

AMEX
VARIO

06

AMEX
MONO

04

AMEX
LEM

08

AMEX
Contact

12

AMEX
Family

10

AMEX. The Company.

For more than 30 years,
AMEX® is specialized in the rehabilitation
of accessible pipes for all applications.

Our Applications

For more than 30 years, AMEX® is specialized in rehabilitating pipe joints and repairing defects in accessible pipes for all applications, including:

- potable water
- raw water
- industrial water
- cooling water
- sewage
- gas
- oil

Our Quality Standards

In order to guarantee the flawless installation and performance of AMEX®-10 inner Sealing Systems, only certified providers are allowed to handle and install

Our Services

In addition to the installation of AMEX®-10 inner Sealing Systems, AMEX® also offers a variety of services to ensure the best-possible functionality of your network:

- Consulting services for pipe repair and rehabilitation
- Project planning and management
- Preventive maintenance
- Installation of AMEX®-10 inner Sealing Systems
- Training and certification of third-party service providers in the installation of AMEX®-10 seals

Should you have any questions, please do not hesitate to contact us. We look forward to hearing from you.

AMEX®-10 inner Sealing Systems. Furthermore, all materials used are certified and tested by independent test institutions.



AMEX MONO.

The AMEX®-10 MONO Seal is ideal for rehabilitating pipe joints and leaks.

Application Areas

The AMEX®-10 MONO Seal is ideally suited for sealing pipe connections and leaks in all common types of pipes, including pipes constructed of steel, cast-iron, steel-concrete, in-situ concrete, PVC, AZ, GRP, clay, PP, as well as PE, for pipes with diameters from DN 600 to DN 6000.

Benefits

- Fastest and most cost-effective solution for rehabilitating pipe joints and leaks worldwide
- Guaranteed lifetime of minimum 50 years
- Flexible and fast installation that does not require any specific use of chemicals [e.g., resins]
- A rehabilitation system requiring no capital investment
- Lifetime enhancement of your pipeline at very little cost

Pressure Range

AMEX®-10 MONO Seals are designed to withstand an internal operating pressure of 25 bar and an outer pressure of 8 bar. Under circumstances where there is a high risk of groundwater infiltration or vacuum, additional structural tension bands are used to guarantee tightness of AMEX®-10 MONO Seals.

Setup & Installation

The AMEX®-10 MONO Seal consist of an elastic rubber seal and 2-3 high-strength stainless steel tension bands – the exact specifications of materials used vary depending on the specific pipes and application [e.g., potable water, raw water, industrial waste water, cooling water, sewage, gas and oil].

In order to ensure a perfect fit, all AMEX®-10 MONO Seals are tailor-made and manually installed. Furthermore, to guarantee pressure-tightness, all seals are tested during installation using our proven test valve.

Approvals & Certificates

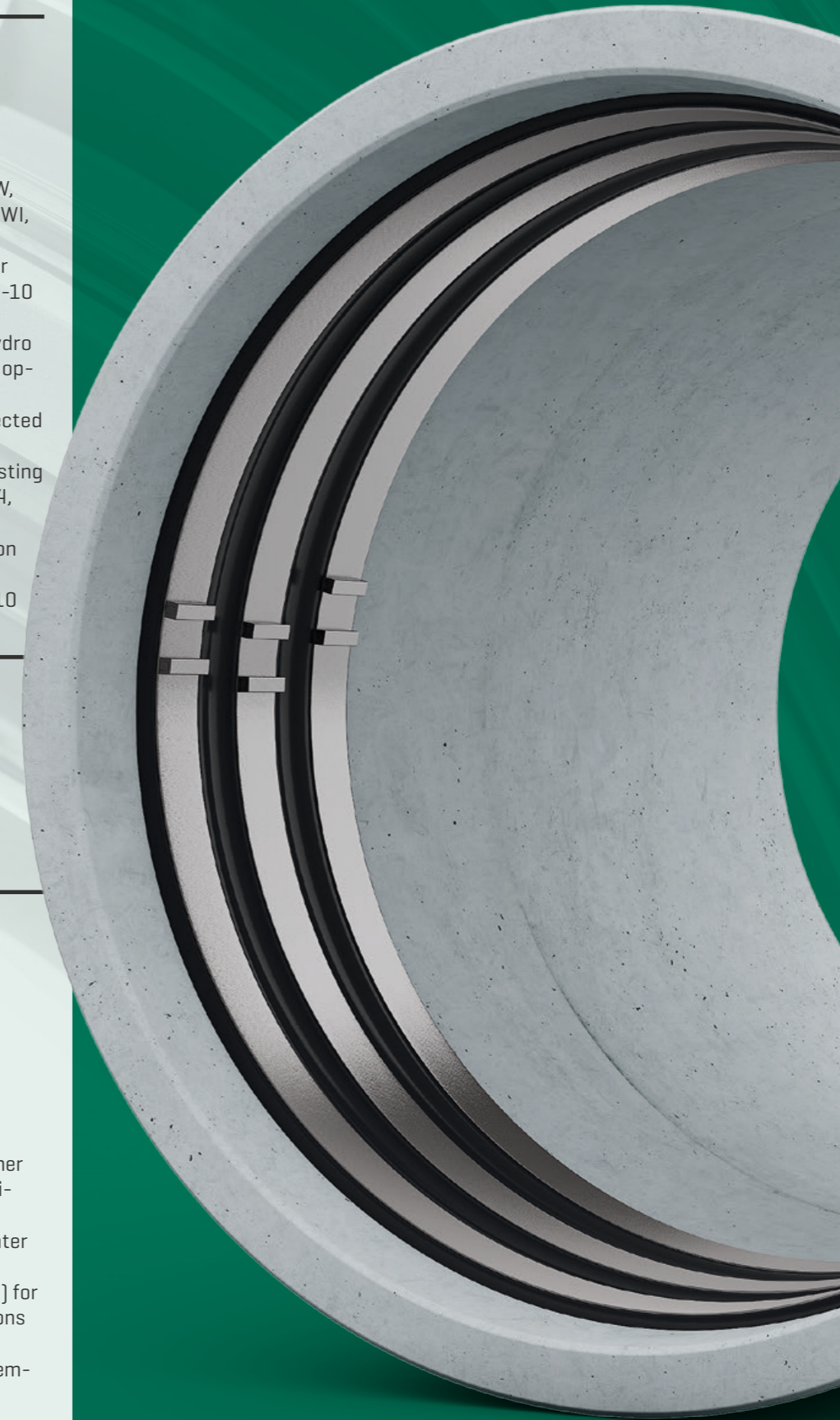
- Potable water approvals: KTW, DVGW W 270, NSF 61, ACS, DWI, WRAS
- German Approval Institute for Construction DIBt for AMEX®-10 MONO Seal: Z-42.3-474
- Proven resistance against hydro pressure jetting and internal operating pressure DIN 19523
- Seal tightness tests for deflected and bended joints
- Comprehensive suitability testing for all raw materials ISO 3384, ISO 188, DIN EN 681
- Compression stress relaxation as per BS 903
- 1000 h pressure test AMEX-10 MONO Seal

Pipe Profile

- Circular
- Mouth
- Ellipse
- Egg

Temperature & Media

- Temperature resistance -30°C to +230°C
- Rubber seal materials: Ethylene Propylene Diene Monomer [EPDM] for all water related applications – potable, raw, industrial-waste, cooling and sewage water
- Nitrile Butadiene Rubber [NBR] for all gas- and oil-related applications
- Fluororubber [FKM] for high temperature resistance



AMEX VARIO.

The flexibility of AMEX®-10 VARIO Seals allows for tailor-made rehabilitation of leaks of any size.

Application Areas

The AMEX®-10 VARIO Seal is ideally suited for sealing wide defect areas and sleeves of any width, as well for protecting entire pipe systems against corrosion caused by aggressive media in all common types of

pipes, including steel, cast-iron, steel-concrete, in-situ concrete, PVC, AZ, GRP, clay, PP, as well as PE, for pipes with diameters from DN 600 to DN 6000.

Benefits

- Variable installation design allows for the rehabilitation of defects in pipes of any length, making costly renovations of an entire length of pipe unnecessary
- Compatibility with all other AMEX®-10 Sealing Systems ensures fast and flexible installation – even in situations where no CIPP or other liner-types can be installed and under difficult on-site conditions
- Proven interlocking technology guarantees absolute fluid density, independent of the pipe or media

Setup & Installation

The AMEX®-10 VARIO Sealing System is based on the sealing principle of the AMEX®-10 MONO Seal. With an AMEX®-10 MONO Seal at the end points, an unlimited number of AMEX®-10 VARIO Seals can be connected to an endless unit of choice. Each AMEX®-10 VARIO Seal is secured by a form-locking interlock with the next seal,

eliminating the possibility of an offset between seals. In order to ensure a perfect fit, all AMEX®-10 VARIO Seals are tailor-made and manually installed. Furthermore, to guarantee pressure-tightness, all seals are tested during installation using our proven test valve.

Pressure Range

The AMEX®-10 VARIO Sealing System is designed to withstand an internal operating pressure of 25 bar and an outer pressure of 8 bar. Under circumstances where there is a high risk of groundwater infiltration or vacuum, additional structural tension bands are used to reinforce AMEX®-10 VARIO Seals and guarantee safety. Furthermore, in case of very high operating pressure there is also the option to re-enforce the seal with textile yarns.

Approvals & Certificates

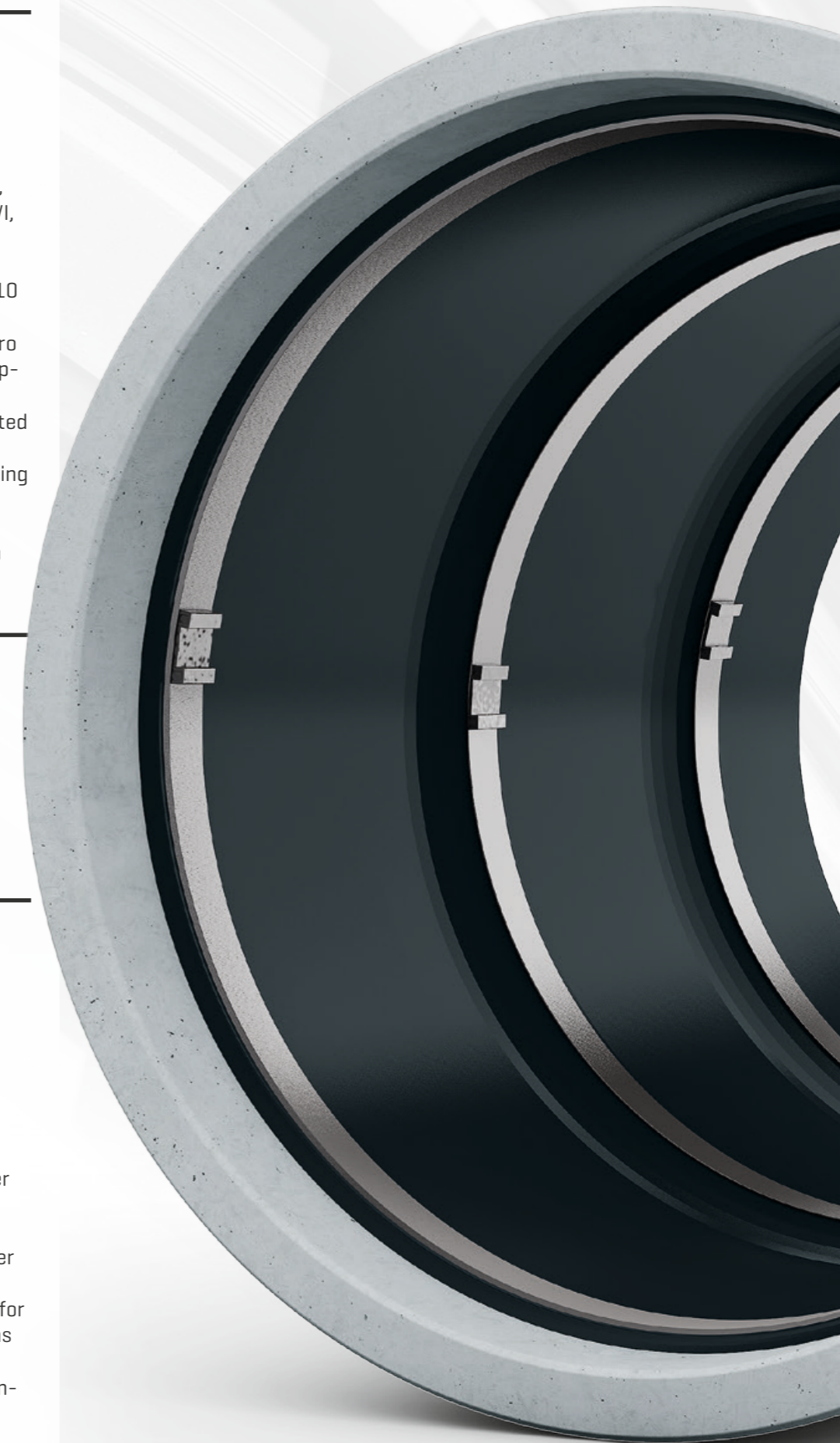
- Potable water approvals: KTW, DVGW W 270, NSF 61, ACS, DWI, WRAS
- German Approval Institute for Construction DIBt for AMEX®-10 MONO Seal: Z-42.3-474
- Proven resistance against hydro pressure jetting and internal operating pressure DIN 19523
- Seal tightness tests for deflected and bended joints
- Comprehensive suitability testing for all raw materials ISO 3384, ISO 188, DIN EN 681
- Compression stress relaxation as per BS 903

Pipe Profile

- Circular
- Mouth
- Ellipse
- Egg

Temperature & Media

- Temperature resistance -30°C to +230°C
- Rubber seal materials: Ethylene Propylene Diene Monomer (EPDM) for all water related applications – potable, raw, industrial-waste, cooling and sewage water
- Nitrile Butadiene Rubber (NBR) for all gas- and oil-related applications
- Fluororubber (FKM) for high temperature resistance



AMEX LEM.

The AMEX®-10 Liner End Seal is ideally suited for sealing applications between liner ends and original pipes.

Application Area

The AMEX®-10 Liner End Seal was specially designed for use as a sealing application between liner ends and original pipes in all common types of pipes, including

steel, cast-iron, steel-concrete, in-situ concrete, PVC, AZ, GRP, clay, PP, as well as PE for pipe diameters from DN 100 to DN 4000.

Benefits

- Durable and flexible sealing against infiltration and exfiltration of all common media, including potable, raw, industrial-waste, cooling, and sewage water, as well oil and gas
- Flexible and fast installation that does not require any specific use of chemicals (e.g., resins)
- No installation machinery needed
- Most versatile application – eliminates the need of costly couplings

Setup & Installation

Similar to the AMEX®-10 MONO Seal, the AMEX®-10 Liner End Seal consists of an elastic rubber seal and 1-2 high-strength stainless steel tension bands, depending on the exact specifications of the liner used and the original pipe. In order to ensure the perfect fit, all

AMEX®-10 Liner End Seals are tailor-made and manually installed. Furthermore, to guarantee pressure-tightness, all seals are tested during installation using our proven test valve.

Pressure Range

AMEX®-10 Liner End Seals are designed to withstand an internal operating pressure of 25 bar and an outer pressure of 8 bar. Under circumstances where there is a high risk of groundwater infiltration or vacuum, additional structural tension bands are used to reinforce AMEX®-10 Liner End Seals and guarantee safety.

Approvals & Certificates

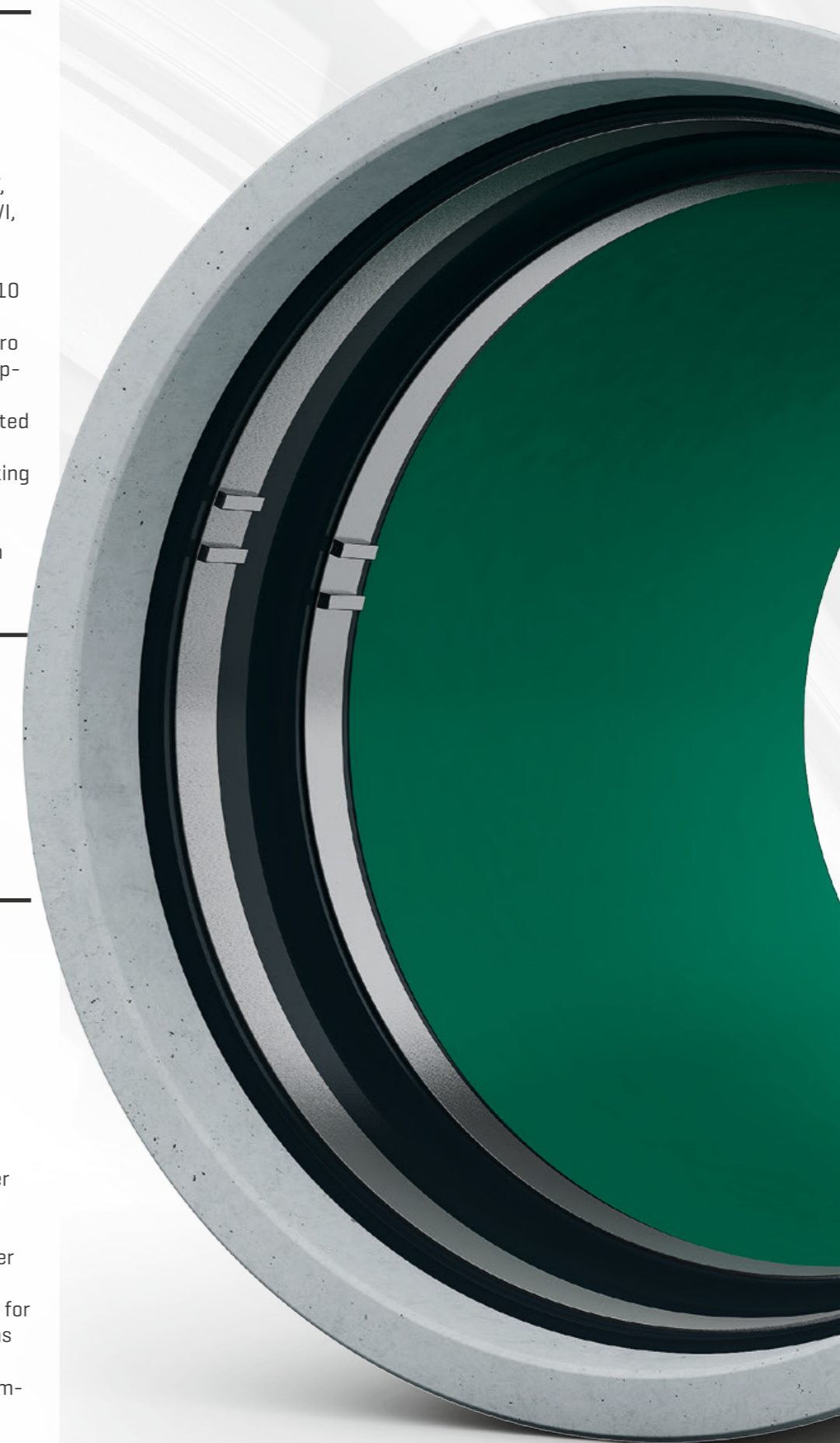
- Potable water approvals: KTW, DVGW W 270, NSF 61, ACS, DWI, WRAS
- German Approval Institute for Construction DIBt for AMEX®-10 MONO Seal: Z-42.3-474
- Proven resistance against hydro pressure jetting and internal operating pressure DIN 19523
- Seal tightness tests for deflected and bended joints
- Comprehensive suitability testing for all raw materials ISO 3384, ISO 188, DIN EN 681
- Compression stress relaxation as per BS 903

Pipe Profile

- Circular
- Mouth
- Ellipse
- Egg

Temperature & Media

- Temperature resistance -30°C to +230°C
- Rubber seal materials: Ethylene Propylene Diene Monomer (EPDM) for all water related applications – potable, raw, industrial-waste, cooling and sewage water
- Nitrile Butadiene Rubber (NBR) for all gas- and oil-related applications
- Fluororubber (FKM) for high temperature resistance



AMEX. The Family.

Over the last 30 years, AMEX has built up a global network of certified installation experts in order to serve clients around the world.

Our operating model

Over the last 30 years, we have created an exceptional knowledge base with information on the rehabilitation of pipes for all possible media and applications, including potable, raw, industrial-waste, cooling, and sewage water, as well as oil and gas.

In order to guarantee the flawless application of all AMEX @-10 inner Sealing Systems, we ensure that all of our licenses receive regular on-site training from our highly specialized installation experts, and we oversee and approve all projects.

If you would like to become part of the AMEX family, do not hesitate to contact us, we are always looking for opportunities to expand our network and enter new markets.



Contact.

Germany is our home,
the world is our comfort zone.



Please contact us.

You will reach us from Monday
till Friday from 7:30am till 5:00pm.

T +49 3 44 96 - 230 350
F +49 3 44 96 - 230 359

M info@amex-10.de

AMEX-10 Trading AG

Neustraße 19
4623 Neuendorf
Switzerland

AMEX GmbH

Raudenitzer Berg 19
04626 Nöbdenitz
Germany

© 2015 AMEX-10 GmbH.
All rights reserved.



AMEX[®]