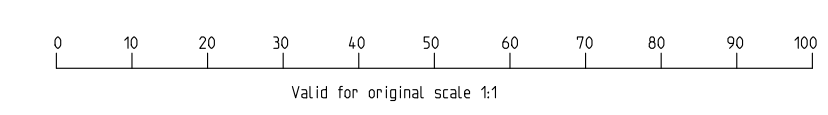


NOTES:
1. DO NOT PAINT THIS SURFACE



Permissible deviations for dimensions without a tolerance indication				Welds		Tolerance		Item		Id. no		Description		Drg. no./Type		Weight		
Dim & tolerance	Upper Limit	Lower Limit	Linear dimension or shortest leg of an angle		Tolerance	Linear	angle	Tolerance	Zone	R.0.no.	Sign./Date	CTRL	Project. used	Original Scale	Prod.ret.	HAE	12-May-21	177.3 kg
			over	to														
Permissible deviations for dimensions with a tolerance indication			6	30	± 0.1	± 0.2	± 0.5°	± 1										
Surface roughness in Ra (µm)	3.2	1.6	30	120	± 0.3	± 0.4	± 0.4°											
Fill. & edg. not dim.			375	1000	± 0.5	± 0.3°	± 1.5	± 0.5°										
			1000	2000	± 1.2	± 0.2°	± 3	± 0.3°										
			2000	4000	± 2		± 4											
			4000	8000	± 3		± 5											

Weight 177.3 kg

Material 596-338-2

Replaces: 596-336-1

Replaced by:

FRAMO
an Alfa Laval brand

COVER SUCTION
SD440
MACHINING

Status: Constr. MKHD 29-Apr-21

Drawn by: MKHD 29-Apr-21

Checked: HAE 12-May-21

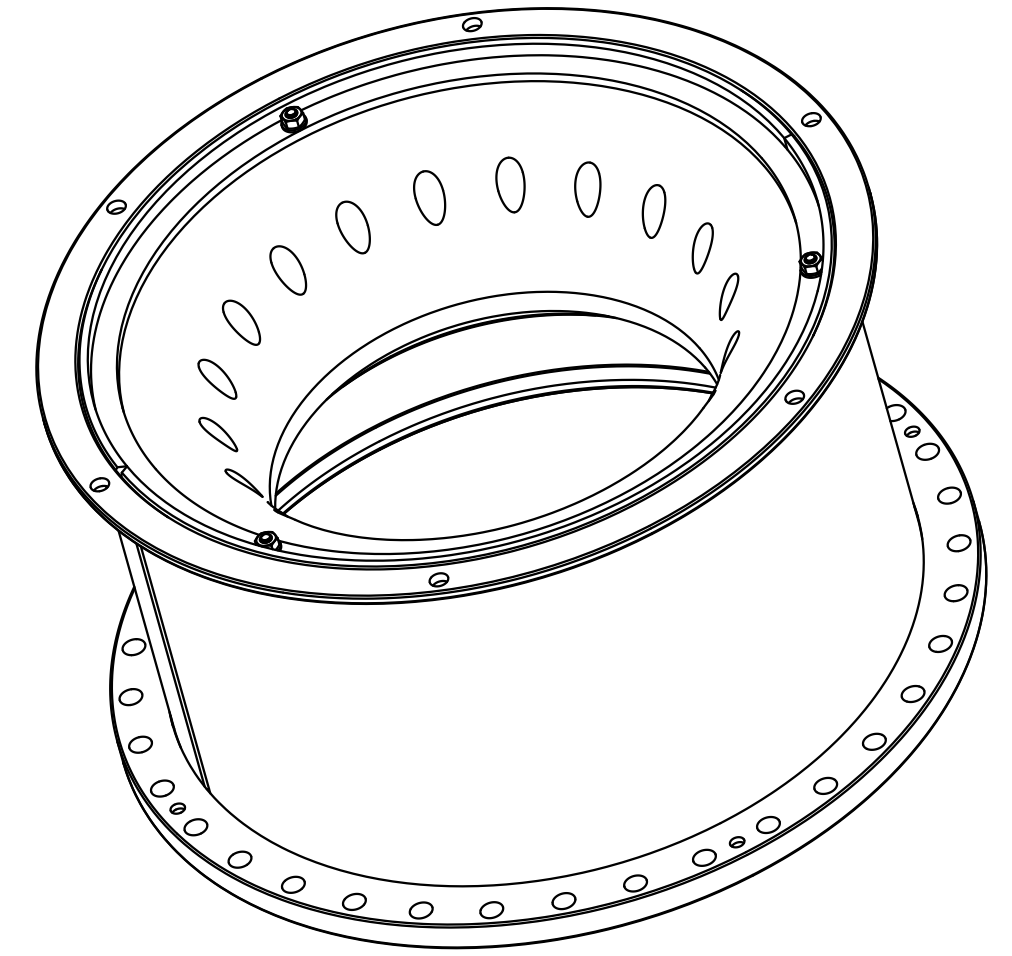
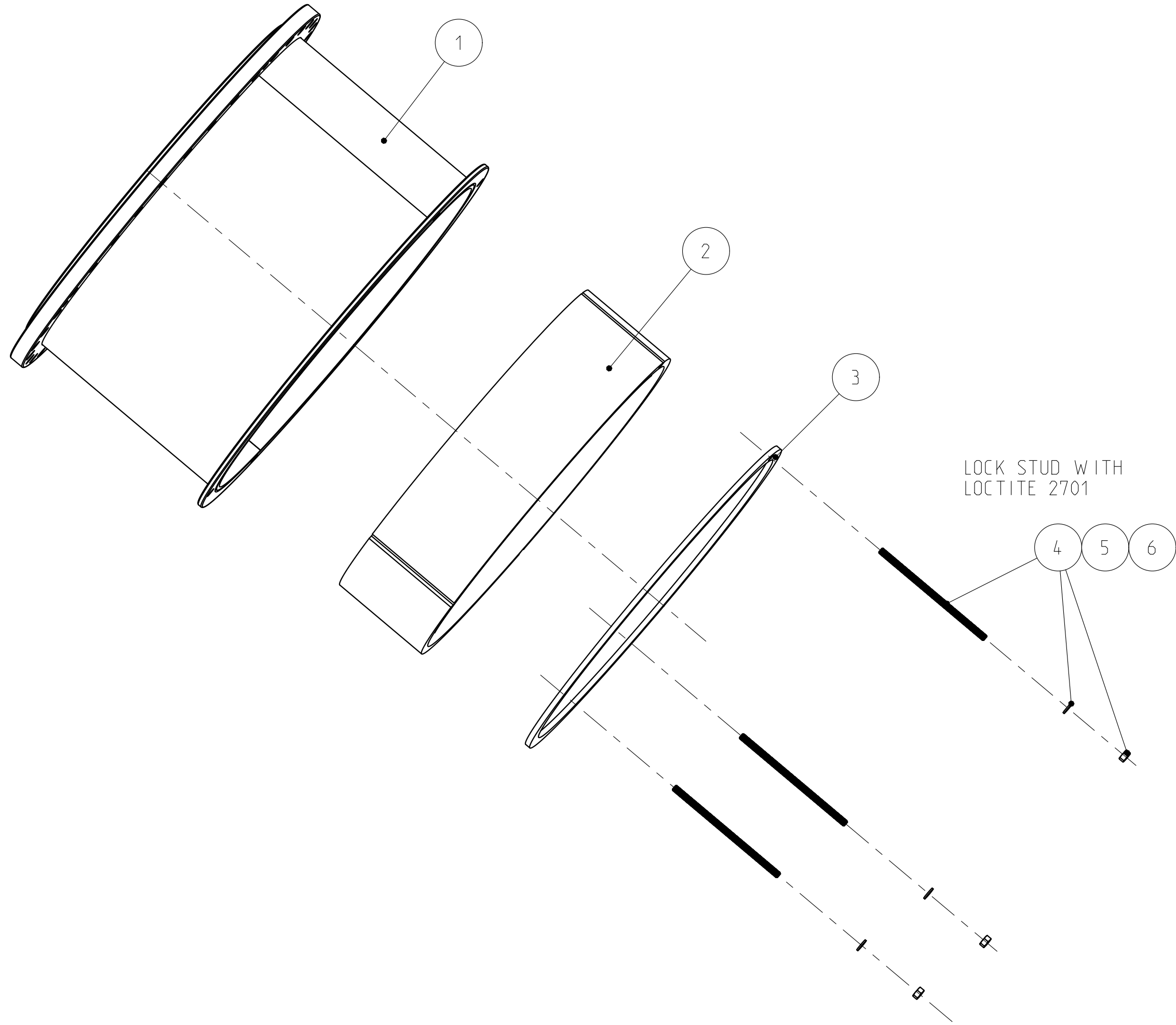
Prot.ret.: HAE 12-May-21

Prod.ret.: HAE 12-May-21

Scale: 2:5

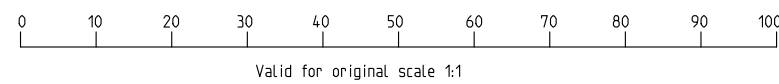
TYPICAL ARRANGEMENT


THREE DIMENSIONAL VIEW



LOCK STUD WITH
LOCTITE 2701

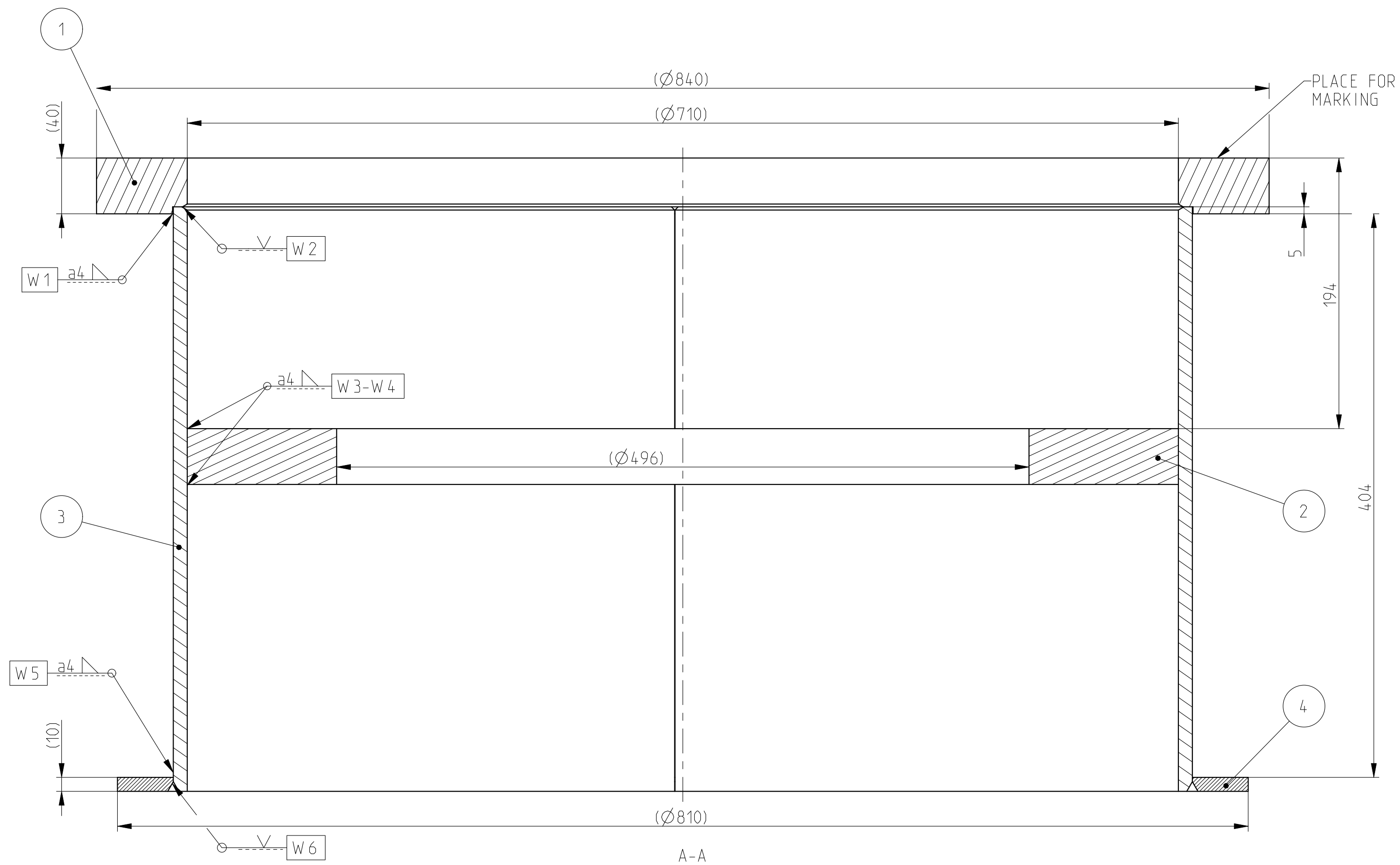
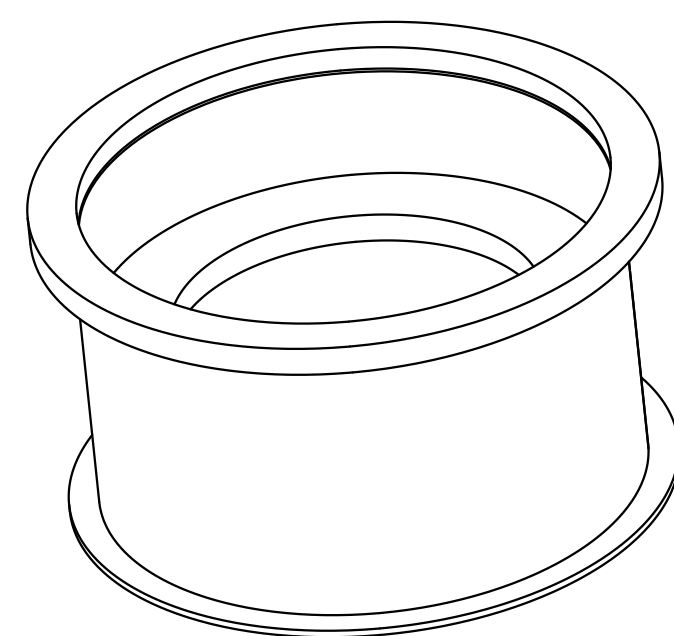
LOCK NUT WITH
LOCTITE 243



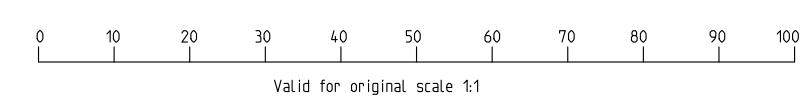
Dim & tolerance			Permissible deviations for dimensions without a tolerance indication				Item Qty		Id. no		Description			Org. no./Type		Material		
Upper Limit	Lower Limit		Linear dimension or shortest leg of an angle		Machined: Tolerance		Welded: Tolerance		This drawing is our property. It is not to be traced, copied or published without our written consent, nor to be misused in any way.			Status	Sign.	Date	 FRAMO an Alfa Laval brand	Replaces:		
over	to		Linear	angle	Linear	angle	Linear	angle	Constr.	MKHO	01-May-21	Replaces:						
			6	30	± 0.1	± 0.5°	± 1	± 0.6°	Drawn by	MKHO	01-May-21	Replaces:						
			30	120	± 0.3	± 0.4			Checked	HAE	12-May-21	596-337-2						
			120	315	± 0.5	± 0.3°	± 1.5	± 0.5°	Prot.rel.			Replaced by:						
			315	1000	± 0.8		± 2	± 0.5°										
			1000	2000	± 1.2		± 3											
			2000	4000	± 2	± 0.2°	± 4	± 0.3°										
			4000	8000	± 3		± 5											
Surface roughness in Ra (µm)			Fillet		Edges		R. Zone		R.O.no.		Sign./Date		Ctrl		Project. used		Original Scale	
7:50																		

F
E
D
C
B
A

THREE DIMENSIONAL VIEW
SCALE 1:10



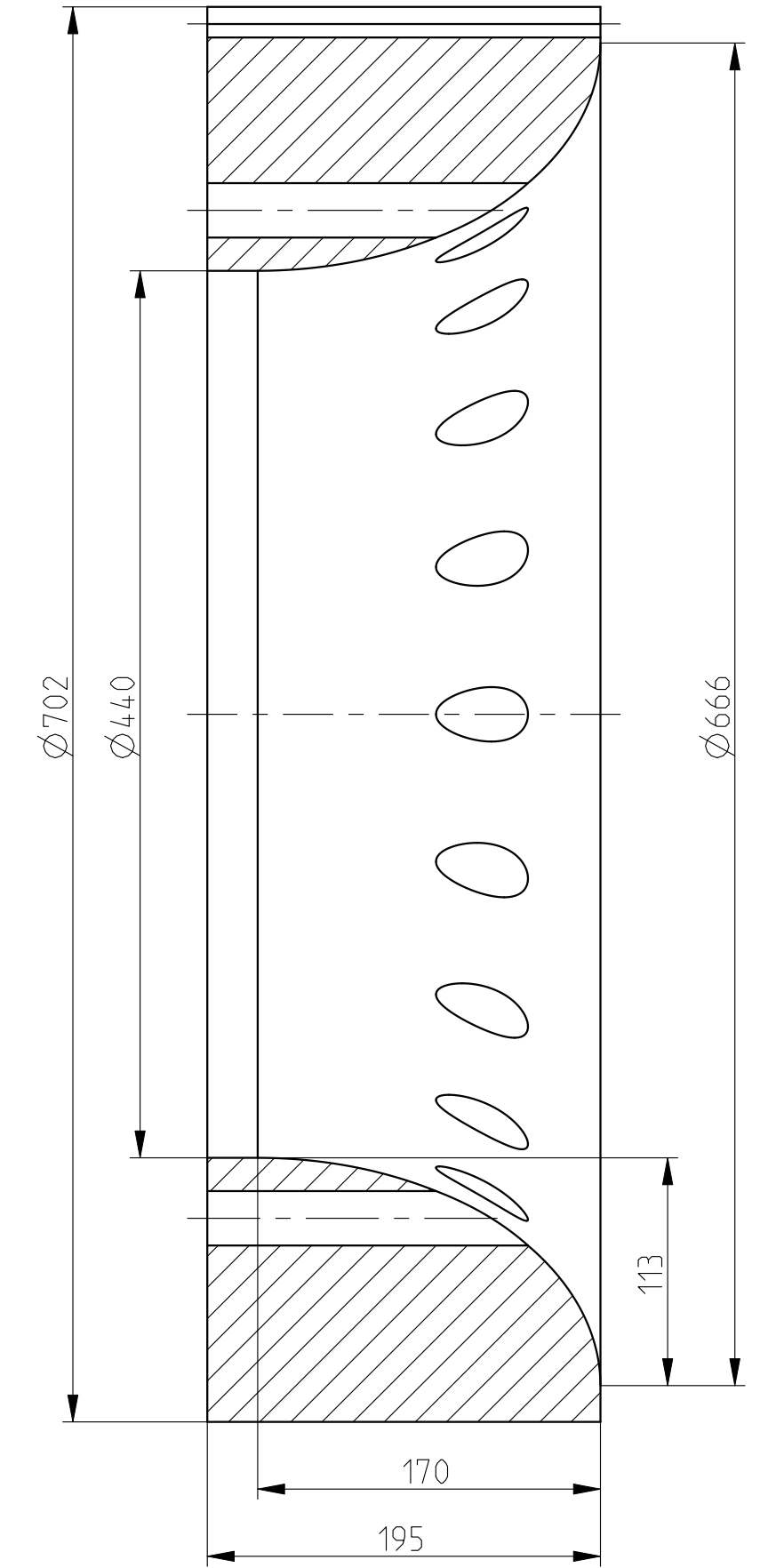
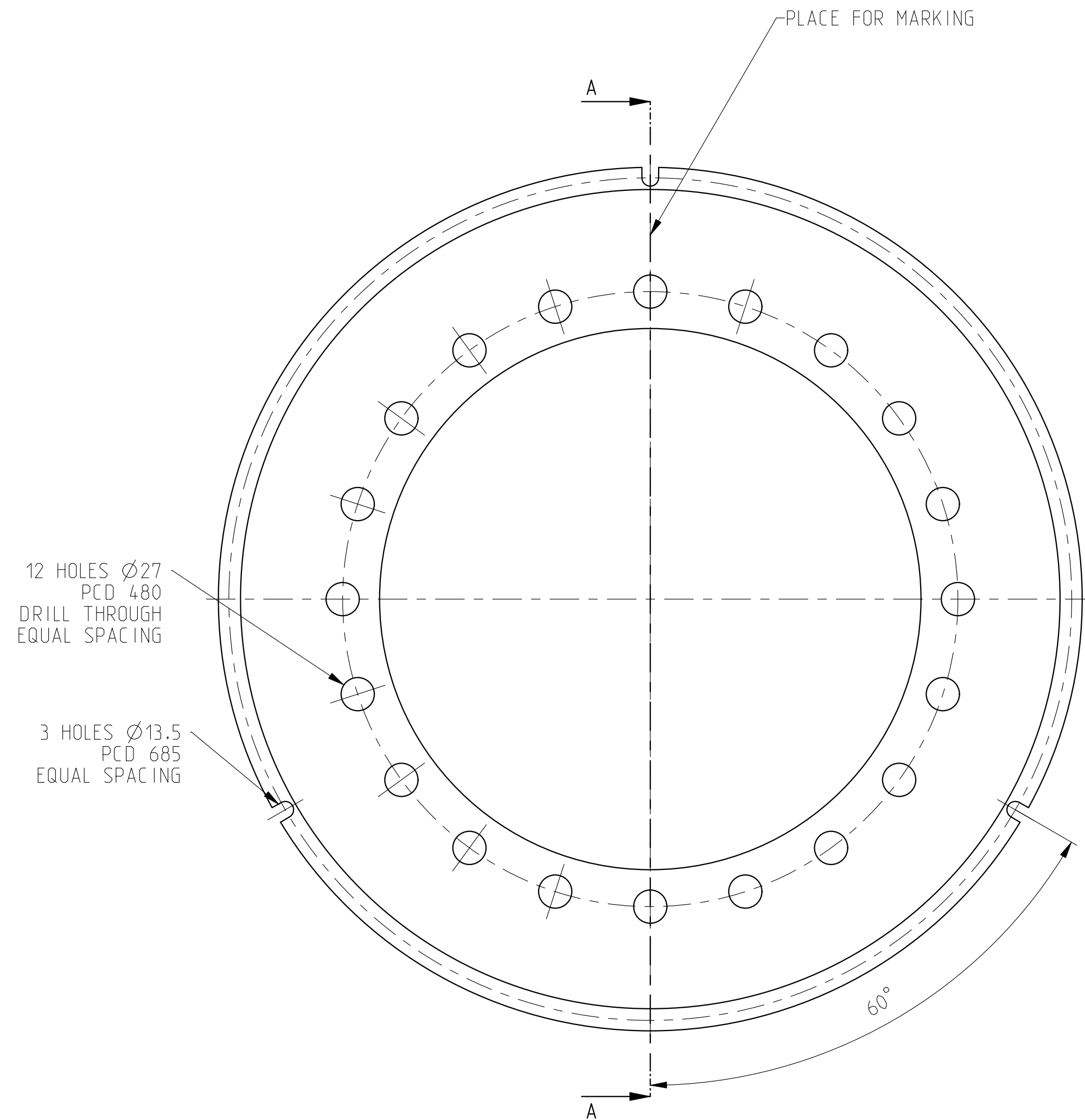
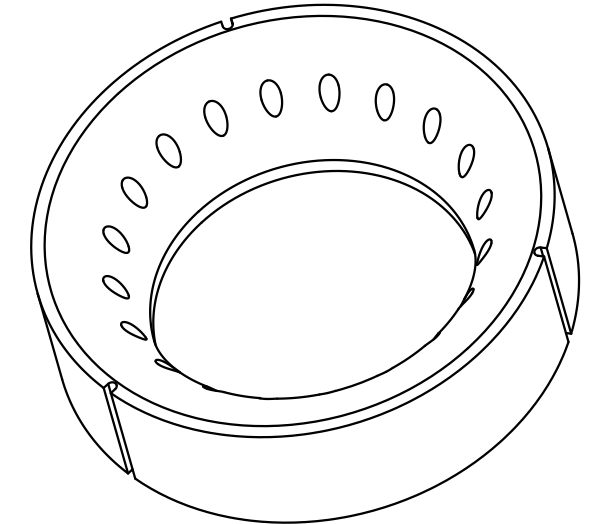
LAST WELD: W6



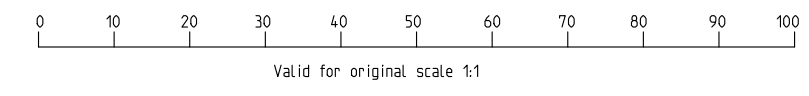
Permissible deviations for dimensions without a tolerance indication				Item		Qty	Id. no	Description			Drg. no./Type		Weight
Dim & tolerance	Upper Limit	Lower Limit	Linear dimension or shortest leg of an angle		Machined: Tolerance		Welded: Tolerance		Status	Sign.	Date	FRAMO an Alfa Laval brand	Material
			over	to	Linear	angle	Linear	angle					
Permissible deviations for dimensions with a tolerance indication			6	30	± 0.1	± 0.2	± 1	± 0.6°	Constr.	ANHA	30-Apr-21	COVER SUCTION WELD	596-338-2
Surface roughness in Ra (µm)			30	120	± 0.3	± 0.4	± 1.5	± 0.5°	Drawn by	ANHA	30-Apr-21		
Fill. & edg. not dim.			120	315	± 0.5	± 0.3°	± 2	± 0.5°	Checked	HAE	12-May-21		
Fill. & edg. not dim.			315	1000	± 0.8	± 0.3°	± 3	± 0.5°	Prot.rel.	HAE	12-May-21		
Fill. & edg. not dim.			1000	2000	± 1.2	± 0.2°	± 4	± 0.3°	Project. used	HAE	12-May-21	Replaces:	
Fill. & edg. not dim.			2000	4000	± 2	± 0.2°	± 5	± 0.3°	Original Scale			Replaced by:	
Fill. & edg. not dim.			4000	8000	± 3	± 0.2°	± 5	± 0.3°	R. Zone				
Fill. & edg. not dim.									R.O.no.				
Fill. & edg. not dim.									Sign./Date				
Fill. & edg. not dim.									Ctrl				


A

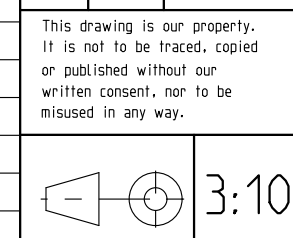
THREE DIMENSIONAL VIEW
SCALE 1:10



A-A



Dim & tolerance		Upper Limit	Lower Limit	Permissible deviations for dimensions without a tolerance indication				Item	Qty	Id. no	Description			Org. no./Type	Weight
Linear dimension or shortest leg of an angle	over	to	Linear	angle	Machined: Tolerance	Welded: Tolerance	Linear	angle	Linear	angle	Status	Sign.	Date	 FRAMO an Alfa Laval brand	Material
Permissible deviations for dimensions with a tolerance indication	6	30	± 0.1	$\pm 0.5^\circ$	± 1	$\pm 0.6^\circ$					Constr.	MKHO	05-May-21		BELLMOUTH BAR SD 440
Surface roughness in Ra (μm)	30	120	± 0.3	± 0.4	± 1.5						Drawn by	MKHO	05-May-21	Replaces:	
Fill. & edg. not dim.	120	315	± 0.5	$\pm 0.3^\circ$	± 2	$\pm 0.5^\circ$					Checked	HAE	12-May-21	596-339-2	
	315	1000	± 0.8	$\pm 0.2^\circ$	± 3	$\pm 0.3^\circ$					Prot.rel.			Replaced by:	
	1000	2000	± 1.2		± 4						Prod.rel.	HAE	12-May-21		
	2000	4000	± 2		± 5										
	4000	8000	± 3												

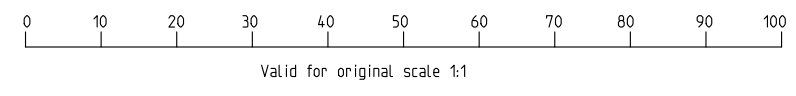
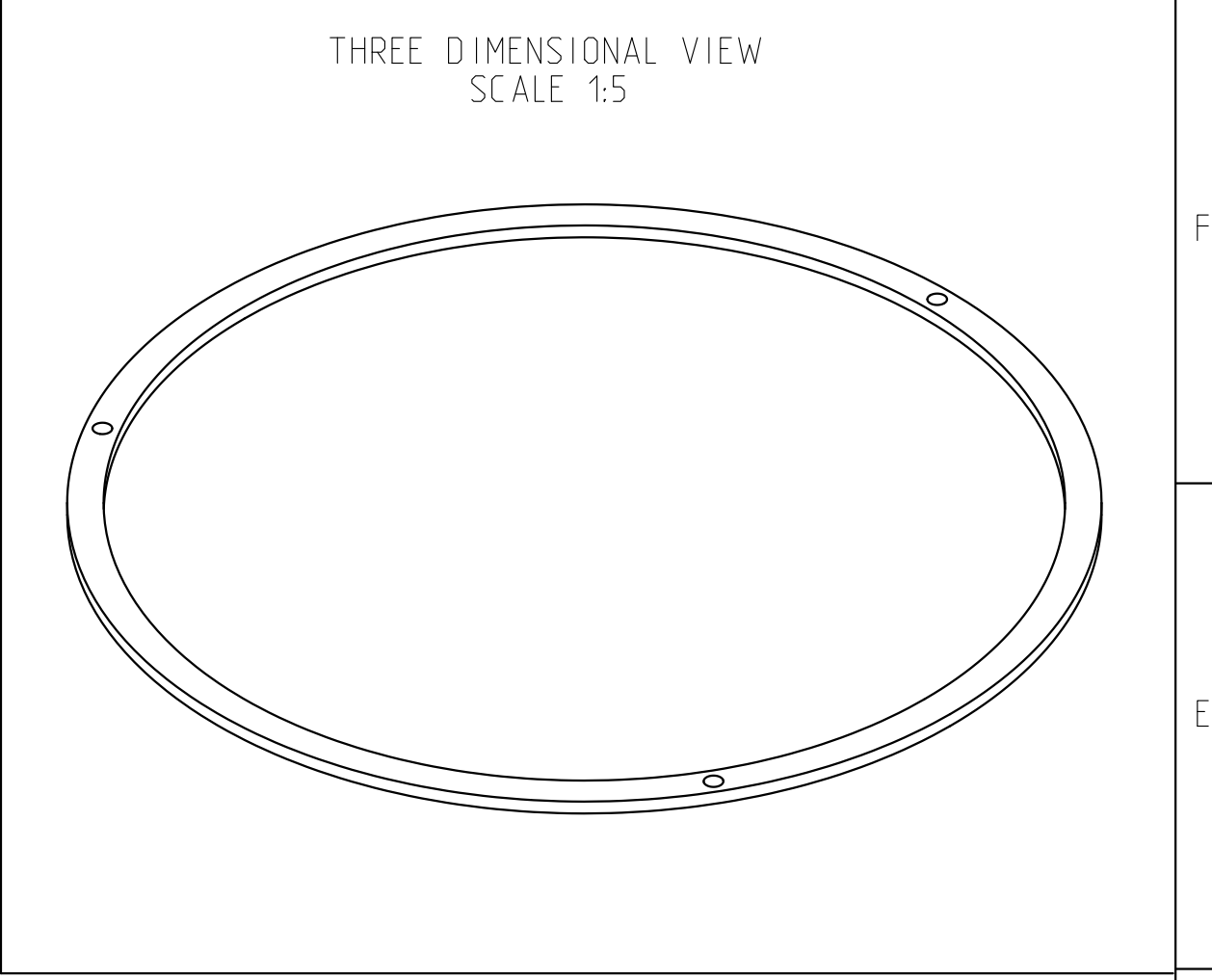
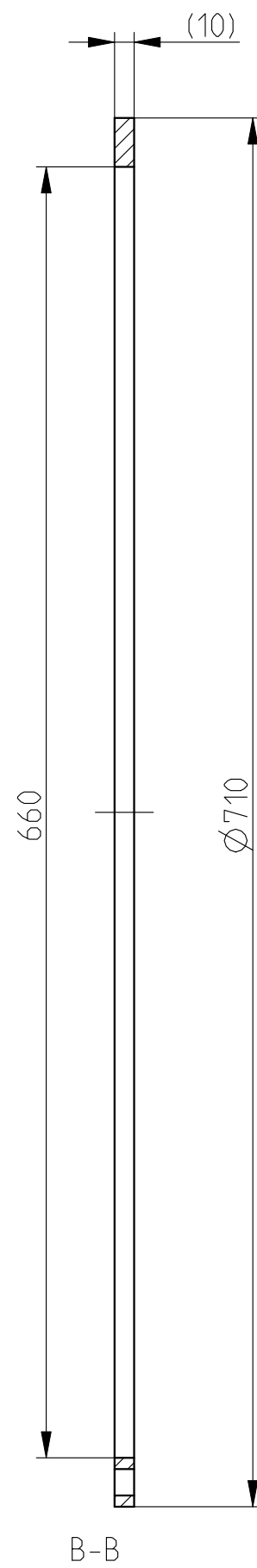
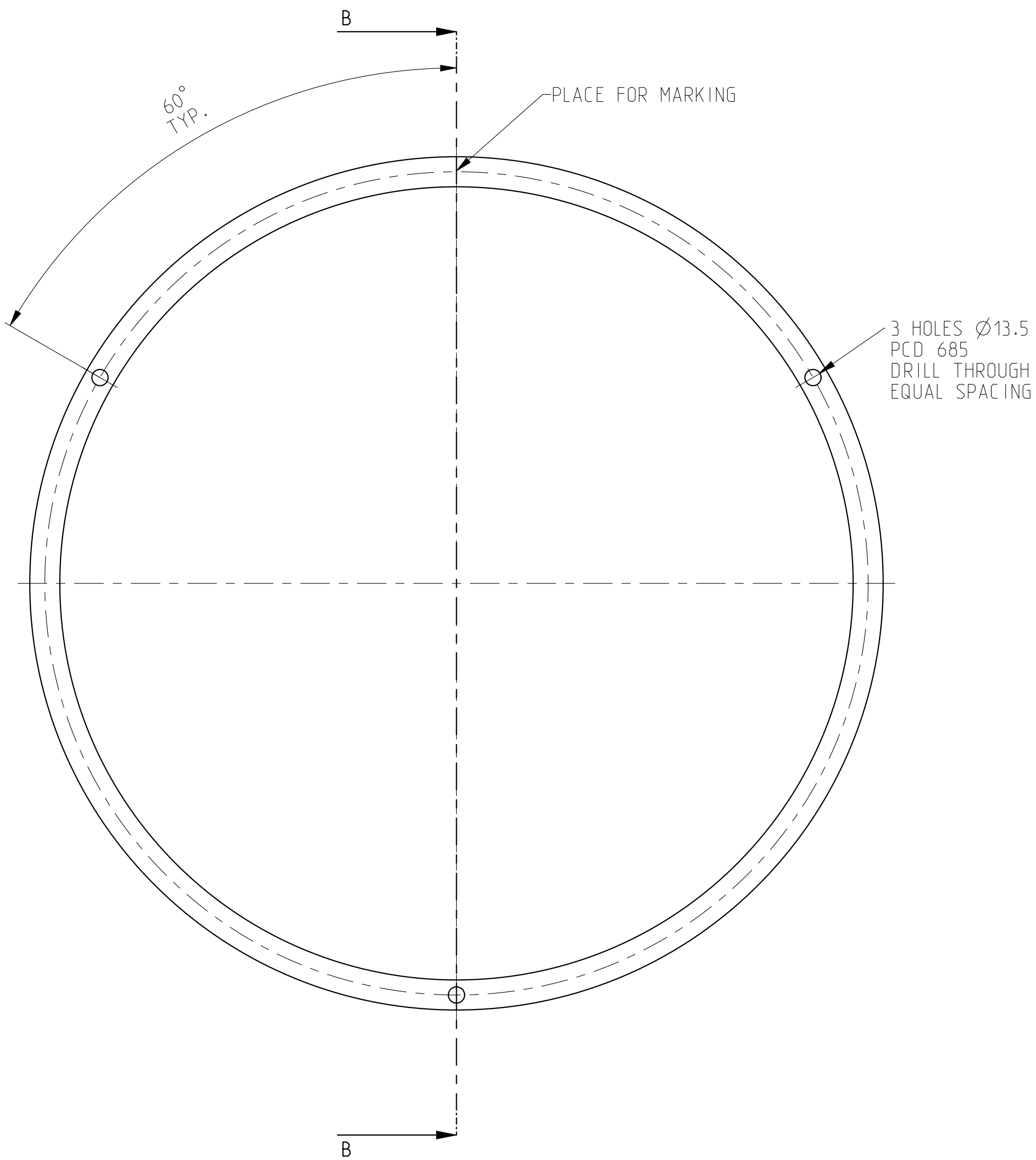


Weight 43.1 kg



BELLMOUTH
BAR
SD 440

Replaces:
596-339-2
Replaced by:



Dim & tolerance		Upper Limit	Lower Limit	Permissible deviations for dimensions without a tolerance indication				Item	Qty	Id. no	Description			Org. no./Type		Weight
Permissible deviations for dimensions with a tolerance indication				Linear dimension or shortest leg of an angle		Machined: Tolerance						Status	Sign.	Date	Material	
				over	to	Linear	angle	Linear	angle			Constr.	MKHO	29-Apr-21	Weld. drg./Cast. drg.	
Surface roughness in Ra (μm)		6.3		6	30	± 0.1	$\pm 0.5^\circ$	± 1	$\pm 0.6^\circ$	This drawing is our property. It is not to be traced, copied or published without our written consent, nor to be misused in any way.		Drawn by	MKHO	29-Apr-21	Replaces:	
Fill. & edg. not dim.		Fillet		30	120	± 0.3	± 0.4	± 2	$\pm 0.5^\circ$	3:10		Checked	HAE	12-May-21	596-340-2	
		Edges		120	315	± 0.5	$\pm 0.3^\circ$	± 3	$\pm 0.5^\circ$	Project. used		Prot.rel.			Replaced by:	
				315	1000	± 0.8		± 4	$\pm 0.3^\circ$	Original Scale		Prod.rel.	HAE	12-May-21		
				1000	2000	± 1.2		± 5		R. Zone						
				2000	4000	± 2	$\pm 0.2^\circ$			R.O.no.						
				4000	8000	± 3				Sign./Date						
										Ctrl						



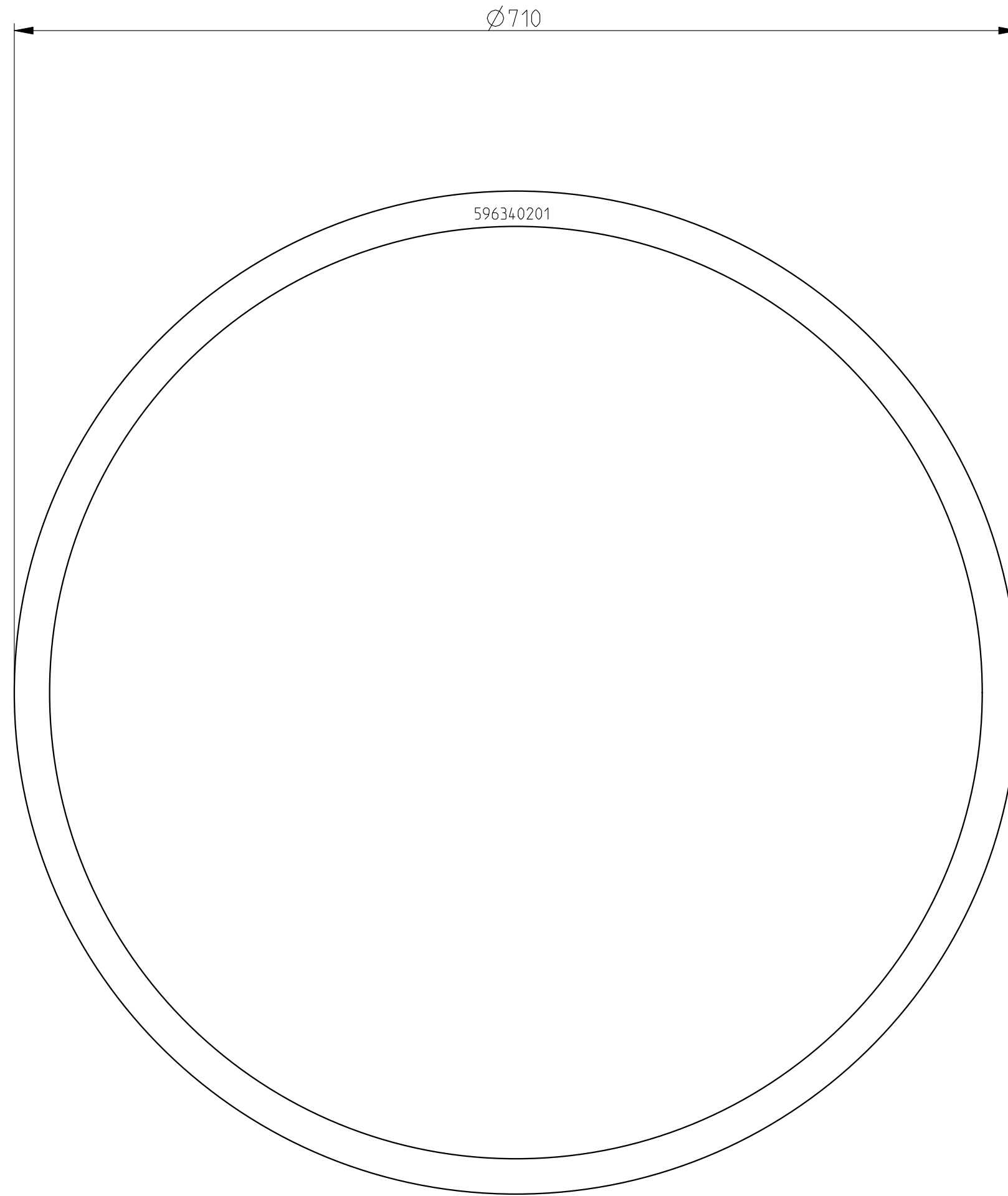
PLATE LOCK
BELLMOUTH

Weight 4.1 kg

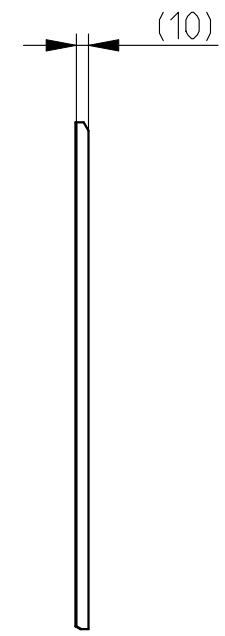
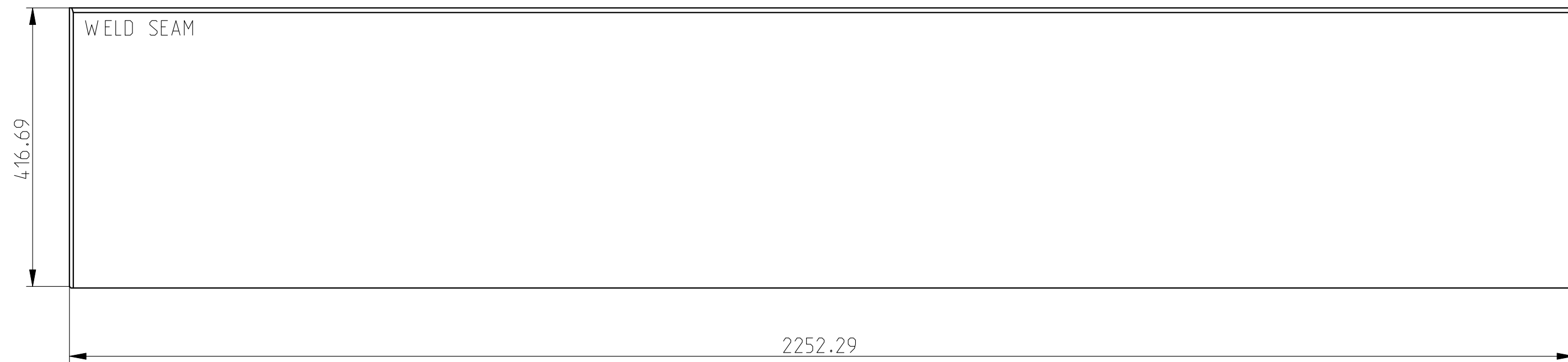
Material

Replaces: 596-340-2

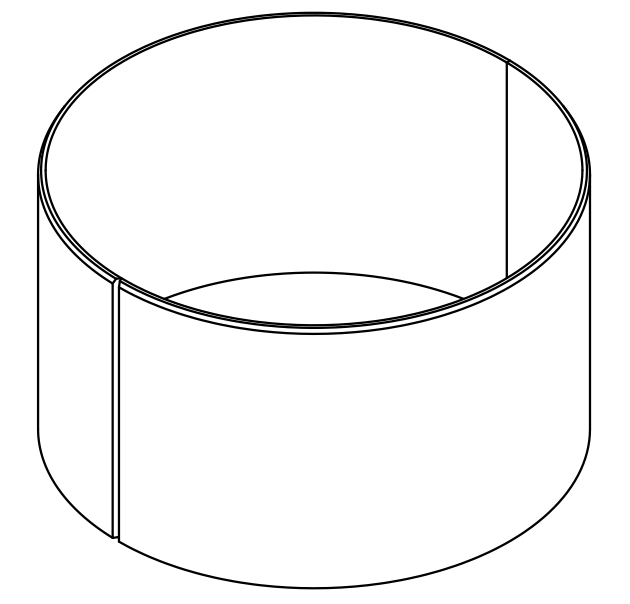
Replaced by:



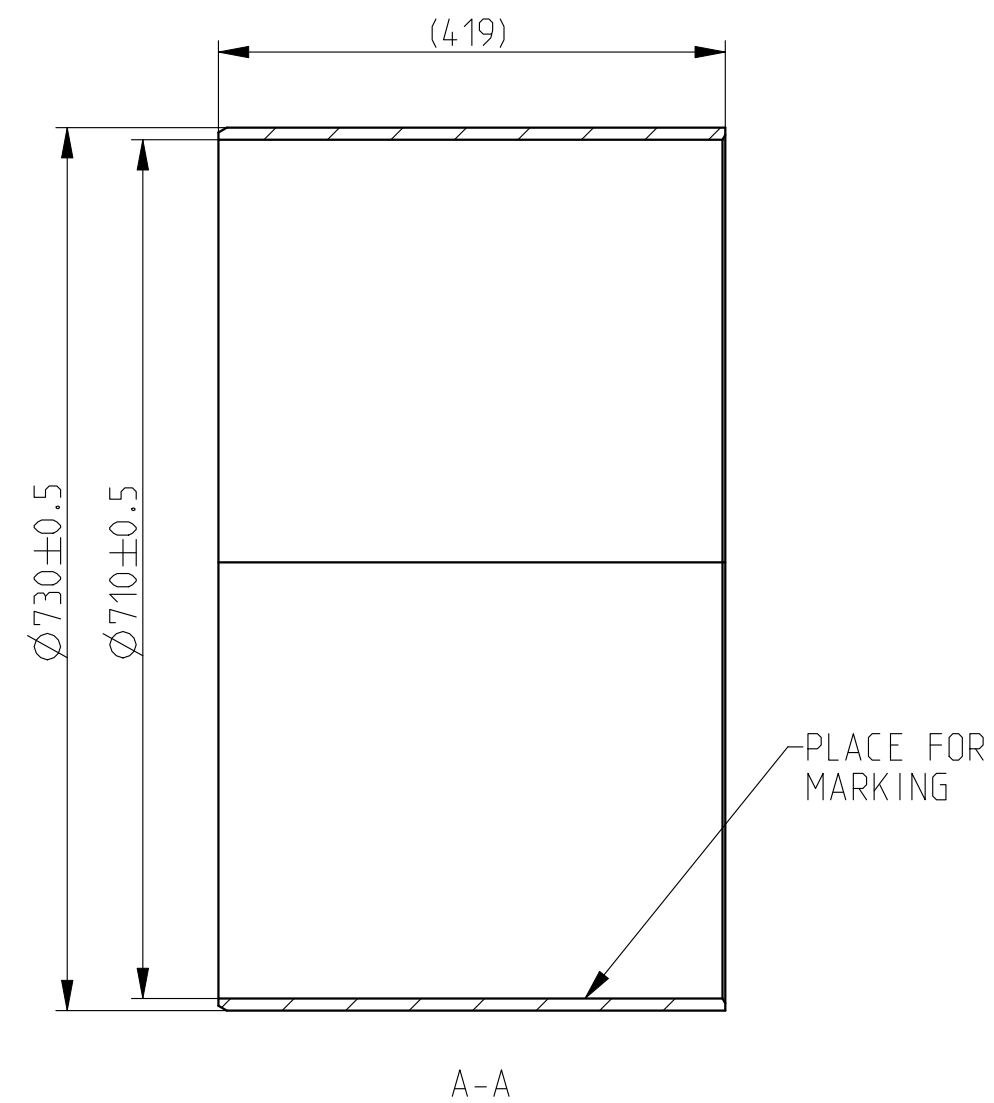
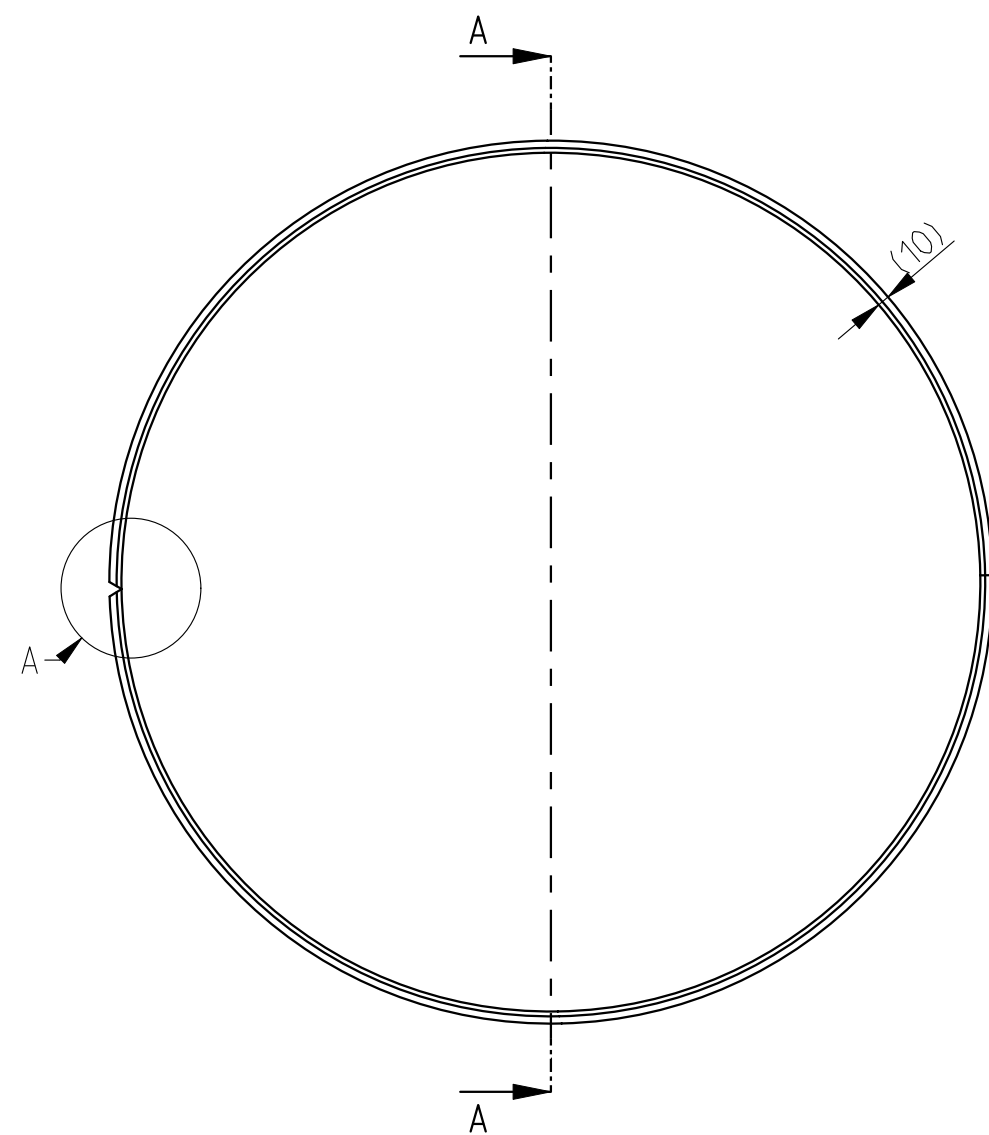
CUTTING TEMPLATE



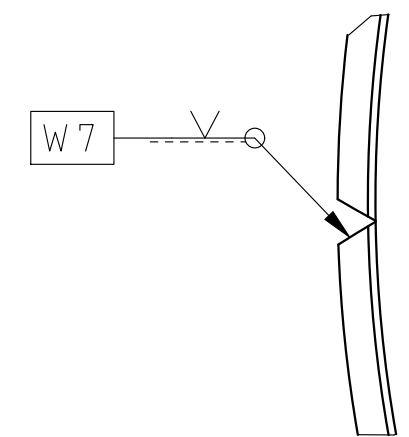
THREE DIMENSIONAL VIEW
SCALE 1:10



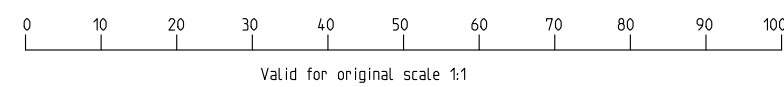
ROLLING / WELDING




DETAIL A
LONG SEAM AFTER ROLLING
SCALE 1:2



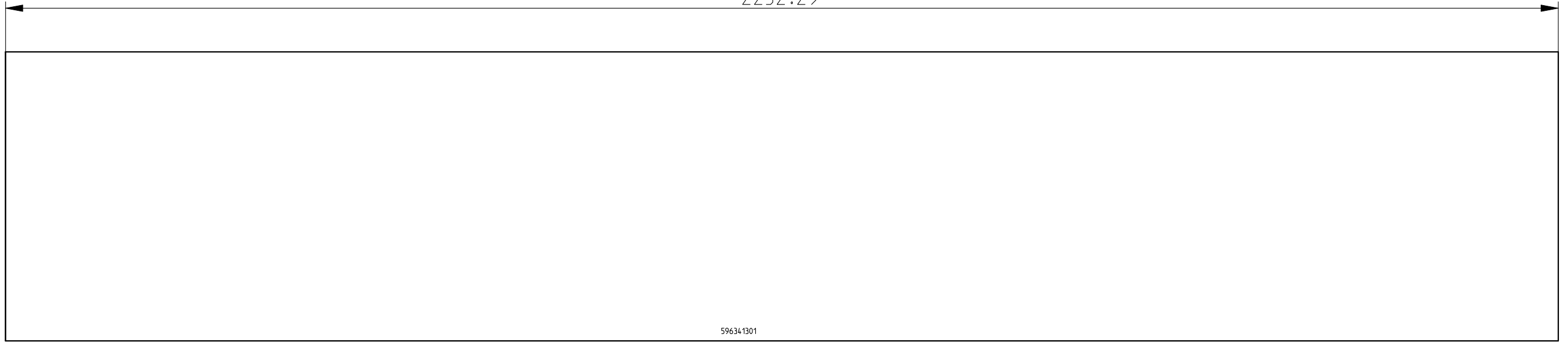
LAST WELD: w7



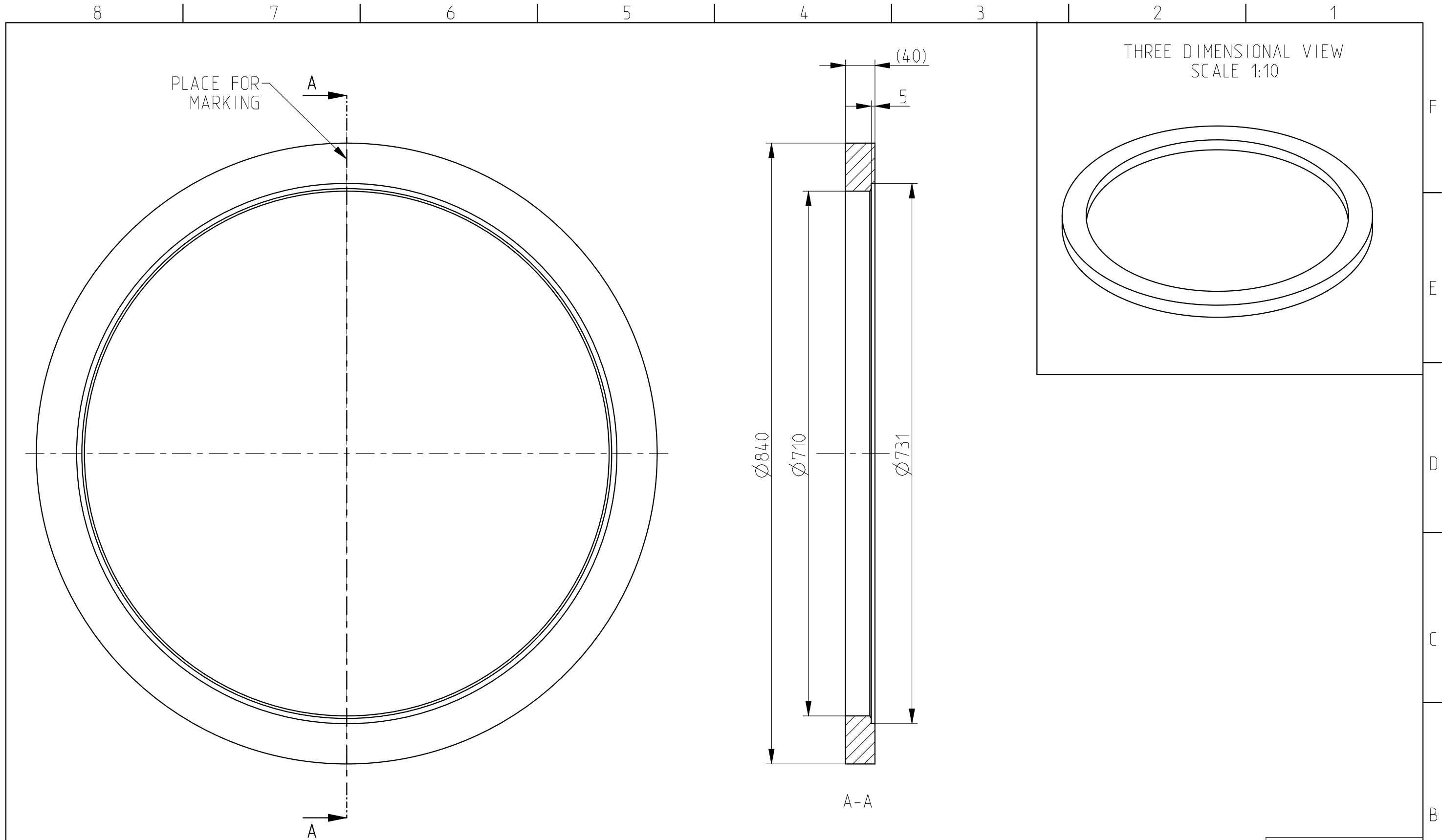
Dim & tolerance		Upper Limit	Lower Limit	Permissible deviations for dimensions without a tolerance indication				Item	Qty	Id. no	Description	Drg. no./Type		Weight		
Permissible deviations for dimensions with a tolerance indication				Linear dimension or shortest leg of an angle		Machined: Tolerance		Welded: Tolerance		This drawing is our property. It is not to be traced, copied or published without our written consent, nor to be misused in any way.		Status	Sign.	Date	 an Alfa Laval brand	Material
over	to	Linear	angle	Linear	angle	Linear	angle	Project. used	Original Scale	Constr.	MKHO	12-May-21	Replaces:			
6	30	± 0.1	± 0.5°	± 0.2	± 1	± 0.6°				Drawn by	MKHO	12-May-21	596-341-2			
30	120	± 0.3	± 0.4	± 0.5	± 1.5	± 0.5°				Checked	HAE	12-May-21				
120	315	± 0.5	± 0.3°	± 0.8	± 2	± 0.5°				Prot.rel.						
315	1000	± 0.8	± 0.2°	± 1.2	± 3	± 0.3°				Prod.rel.	HAE	12-May-21				
1000	2000	± 1.2	± 0.2°	± 2	± 4	± 0.3°				HOOD SUCTION COVER						
2000	4000	± 2	± 0.2°	± 3	± 5	± 0.3°				-						
4000	8000	± 3	± 0.2°	± 4	± 5	± 0.3°				-						

Weight	73.8 kg
Material	
Replaces:	596-341-2
Replaced by:	

2252.29



596341301

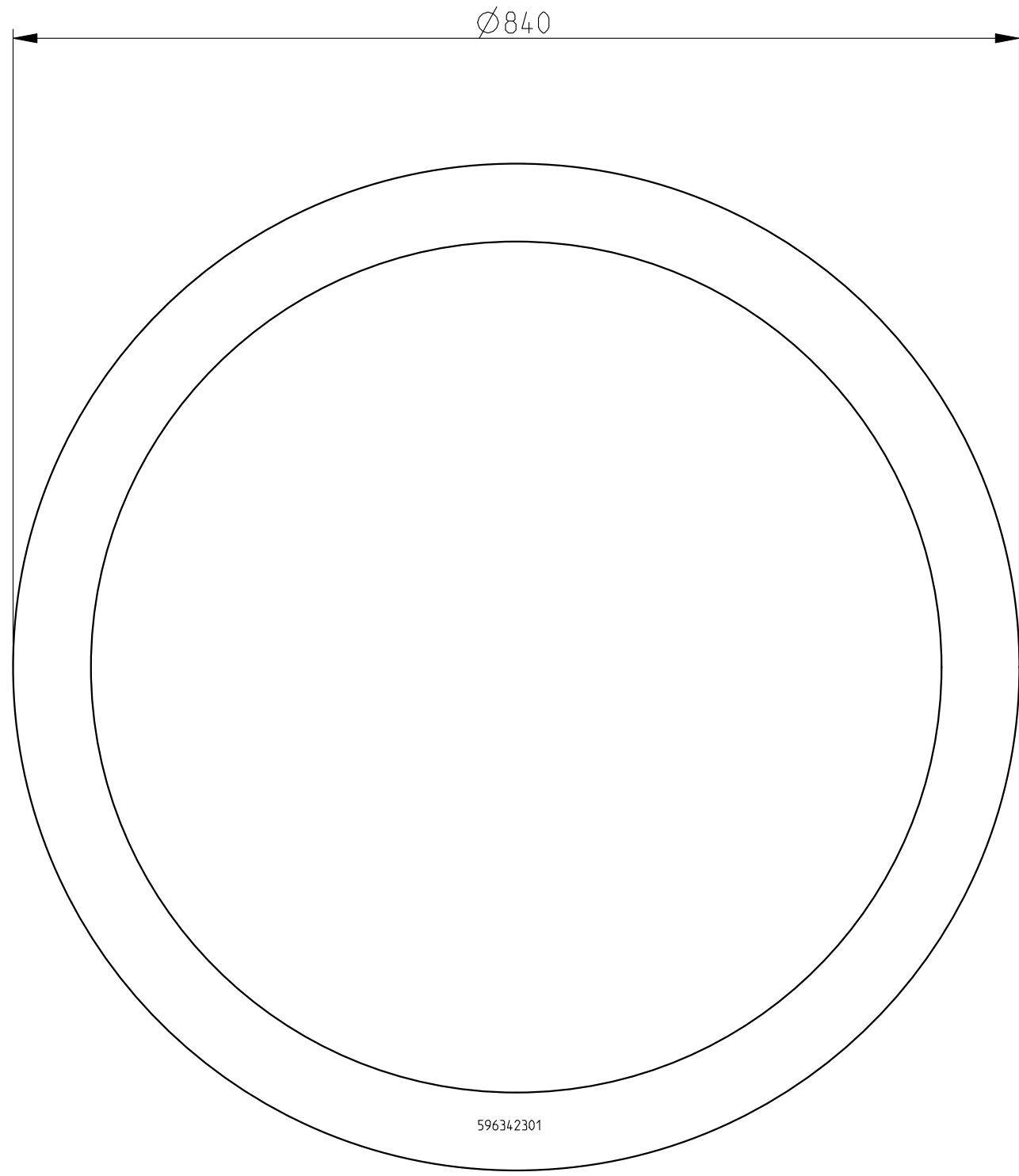


										Weight 48.4 kg	
										Material	
										Weld. drg./Cast. drg.	
										Replaces:	
										596-342-3	
										Replaced by:	

Dim & tolerance	Upper Limit	Lower Limit	Permissible deviations for dimensions without a tolerance indication				Machined: Tolerance	Welded: Tolerance	R.	Zone	R.O.no.	Sign./Date	Ctrl	Item	Qty	Id. no	Description	Drg. no./Type
			Linear dimension or shortest leg of an angle	Linear	angle	Linear												
Surface roughness in Ra (µm)	6.3		over	to	± 0.1	± 0.5°	± 1	± 0.6°										
Fill. & edg. not dim.	Fillet	Edges	6	30	± 0.2	± 0.5°												
			30	120	± 0.3	± 0.4°												
			120	315	± 0.5	± 0.3°	± 1.5											
			315	1000	± 0.8	± 0.3°	± 2	± 0.5°										
			1000	2000	± 1.2	± 0.2°	± 3											
			2000	4000	± 2	± 0.2°	± 4	± 0.3°										
			4000	8000	± 3	± 0.2°	± 5											

This drawing is our property. It is not to be traced, copied or published without our written consent, nor to be misused in any way.			Status	Sign.	Date
			Constr.	ANHA	29-Apr-21
			Drawn by	ANHA	29-Apr-21
			Checked	HAE	12-May-21
			Prot.rel.		
			Prod.rel.	HAE	12-May-21

FRAMO an Alfa Laval brand	
FLANGE UPPER SUCTION COVER	



8

7

6

5

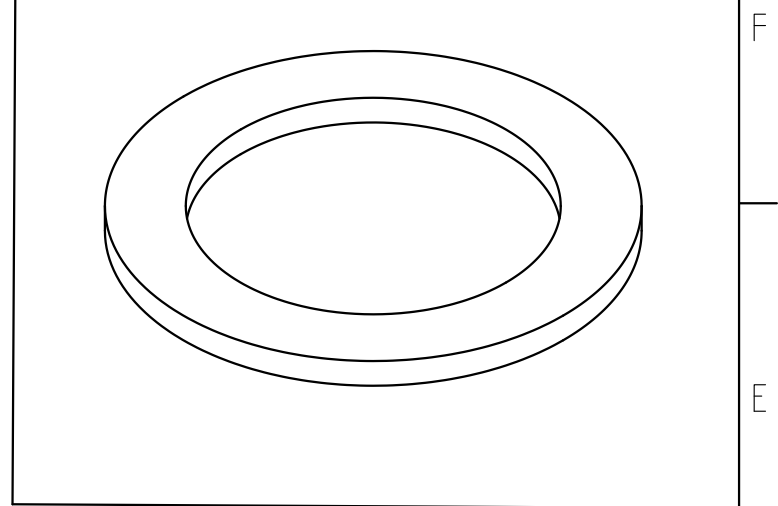
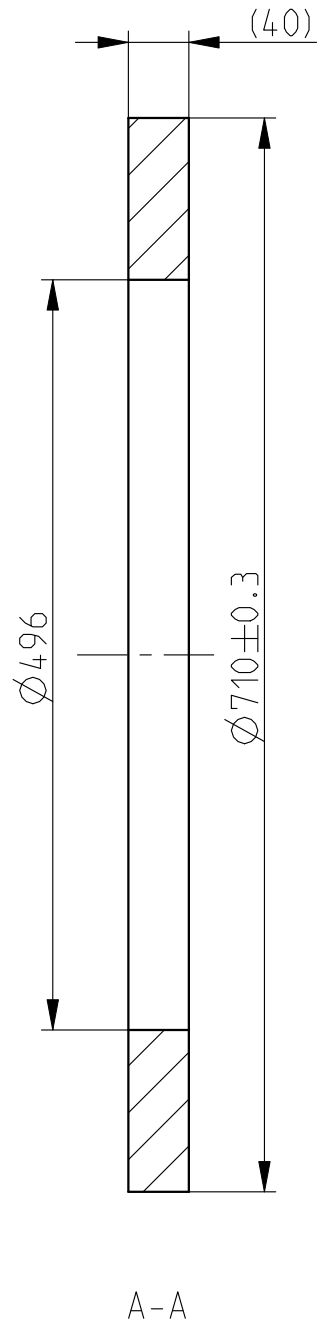
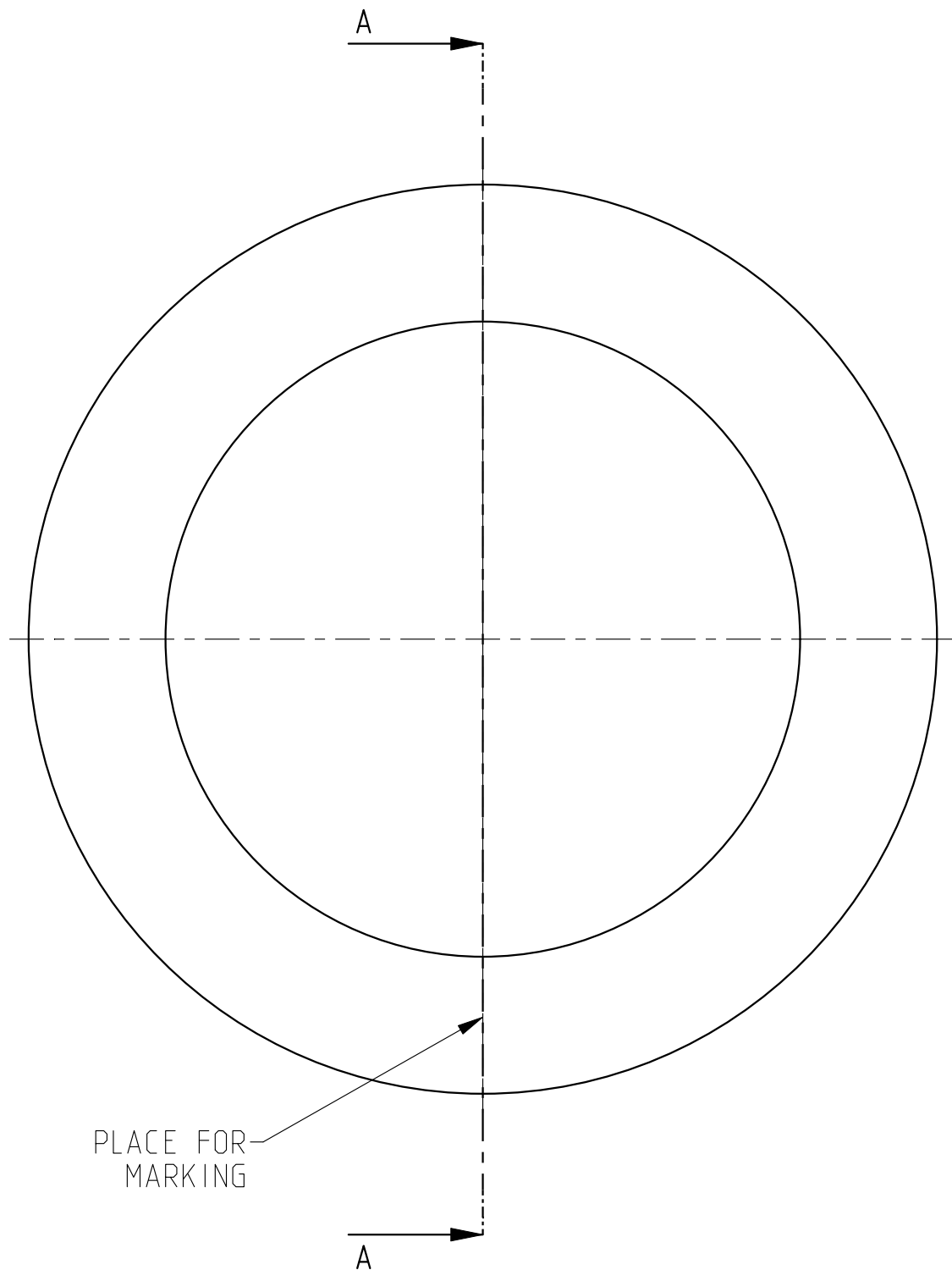
4

3

2

1


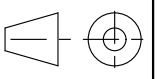
THREE DIMENSIONAL VIEW
SCALE 1:10



PLACE FOR
MARKING

A-A

Weight 6,3 kg

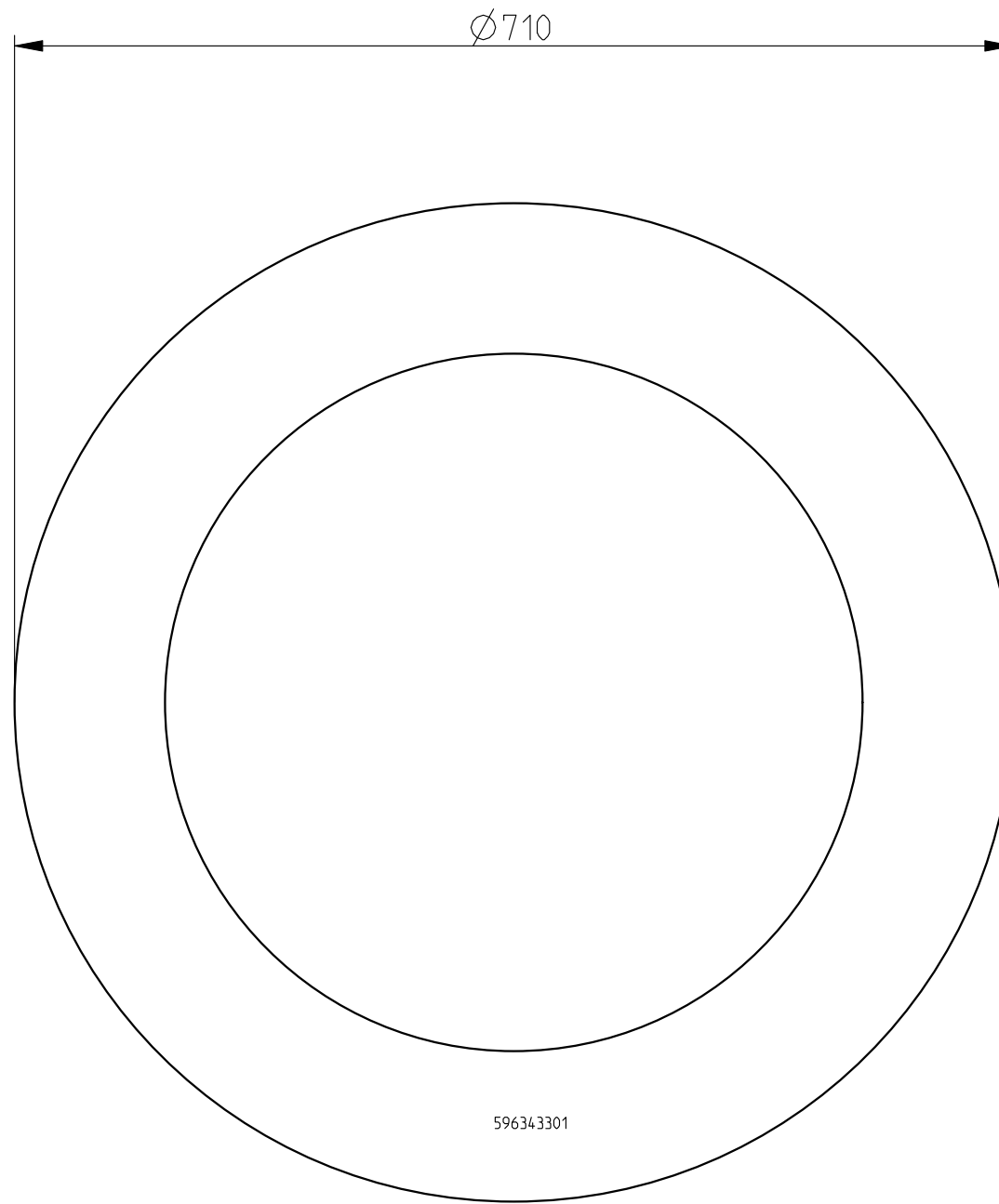
Dim & tolerance			Upper Limit	Lower Limit	Permissible deviations for dimensions without a tolerance indication				Item	Qty	Id. no	Description	Drg. no./Type			Material	
		over	to	Linear	angle	Linear	angle	Linear	angle	This drawing is our property. It is not to be traced, copied or published without our written consent, nor to be misused in any way.			Status	Sign.	Date		Weld. drg./Cast. drg.
Permissible deviations for dimensions with a tolerance indication		6	30	± 0.1	$\pm 0.5^\circ$	± 0.2	$\pm 0.6^\circ$	± 1	$\pm 0.6^\circ$		1:5	Constr.	MKHO	29-Apr-21	FLANGE F/ WEAR RING -		Replaces:
Surface roughness in Ra (μm)		30	120	± 0.3	$\pm 0.4^\circ$	± 0.5	$\pm 0.3^\circ$	± 1.5	$\pm 0.5^\circ$			Drawn by	MKHO	29-Apr-21		Replaces:	
Fill. & edg. not dim.	Fillet	Edges	120	315	± 0.5	$\pm 0.3^\circ$	± 2	$\pm 0.5^\circ$	± 2			$\pm 0.5^\circ$	Checked	HAE		12-May-21	596-343-3
			315	1000	± 0.8	$\pm 0.3^\circ$	± 3	$\pm 0.3^\circ$	± 3			$\pm 0.3^\circ$	Prot.rel.				Replaced by:
			1000	2000	± 1.2	$\pm 0.2^\circ$	± 4	$\pm 0.3^\circ$	± 4			$\pm 0.3^\circ$	Prod.rel.	HAE		12-May-21	
		2000	4000	± 2	$\pm 0.2^\circ$	± 5	$\pm 0.3^\circ$	± 5	$\pm 0.3^\circ$	R. Zone	R.O.no.	Sign./Date	Ctrl	Project. used	Original Scale		
		4000	8000	± 3	$\pm 0.2^\circ$	± 5	$\pm 0.3^\circ$	± 5	$\pm 0.3^\circ$								

596-343-3



FLANGE
F/ WEAR RING
-

Replaced by:



8

7

6

5

4

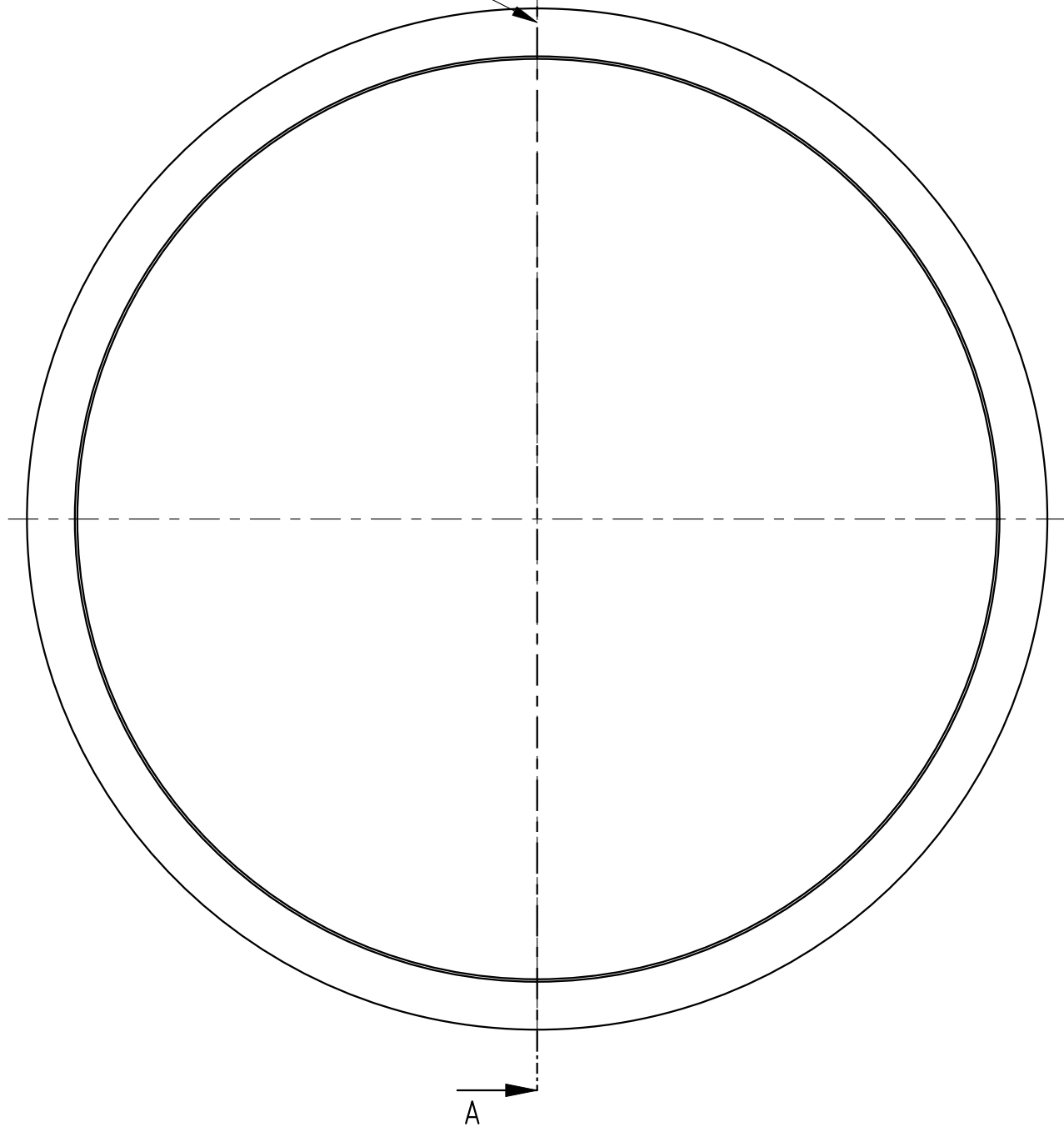
3

2

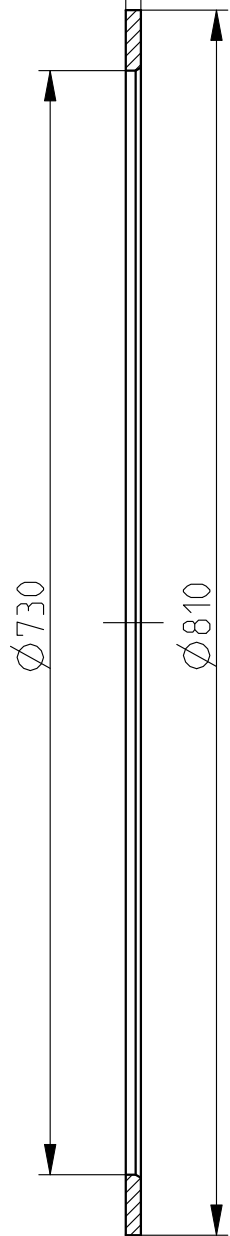
1

PLACE FOR MARKING

A

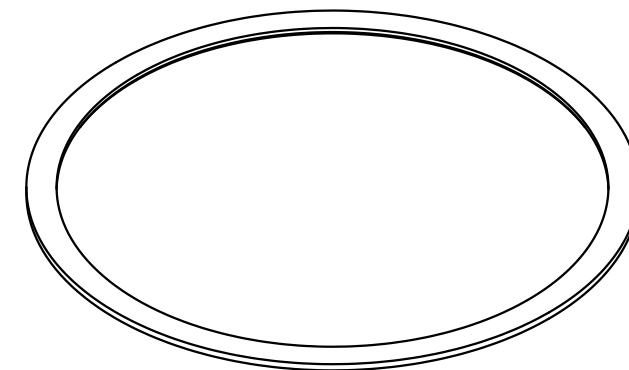


(10)



A-A

THREE DIMENSIONAL VIEW
SCALE 1:10

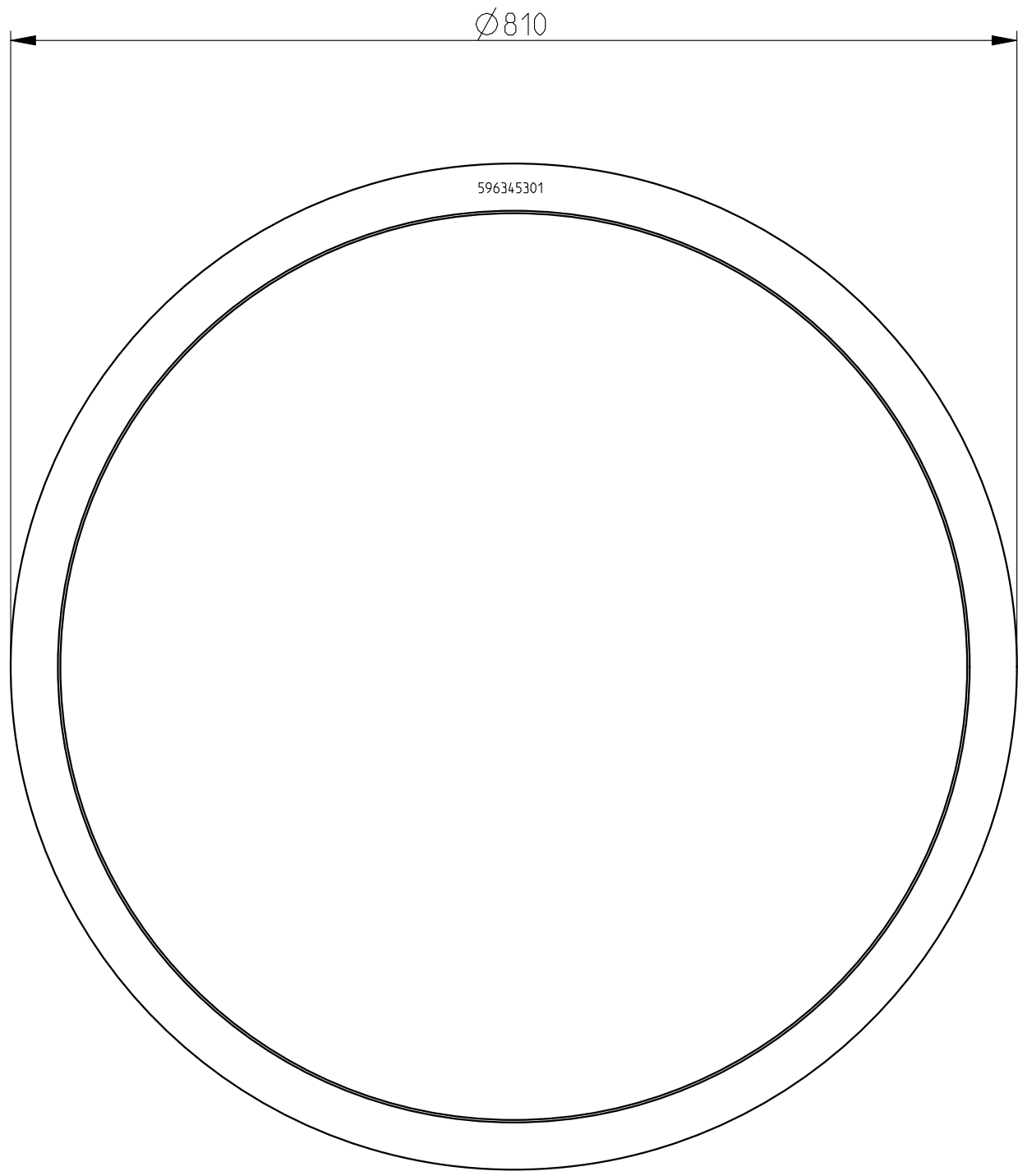


Weight 7.4 kg

Dim & tolerance			Permissible deviations for dimensions without a tolerance indication				Machined: Tolerance		Welded: Tolerance		Item	Qty	Id. no	Description			Drg. no./Type		Material
Upper Limit	Lower Limit		Linear dimension or shortest leg of an angle	Linear	angle	Linear	angle	Linear	angle	This drawing is our property. It is not to be traced, copied or published without our written consent, nor to be misused in any way.			Status	Sign.	Date	FRAMO an Alfa Laval brand		Weld. drg./Cast. drg.	
over	to									1:5			Constr.	MKHO	29-Apr-21	FLANGE F/ STRAINER		Replaces:	
			6	± 0,1	± 0,5°			± 1	± 0,6°				Drawn by	MKHO	29-Apr-21				
			6	± 0,2									Checked	ANHA	12-May-21			596-345-3	
			30	± 0,3	± 0,4°			± 1,5					Prot.rel.						
			120	± 0,5	± 0,3°			± 2	± 0,5°				Prod.rel.	HAE	12-May-21				
			315	± 0,8				± 3											
			1000	± 1,2				± 4	± 0,3°										
			2000	± 2	± 0,2°			± 5											
			4000	± 3															
										R.	Zone	R.O.no.	Sign./Date	Ctrl	Project. used	Original Scale			Replaced by:

F
E
D
C
B

A



8

7

6

5

4

3

2

1

F

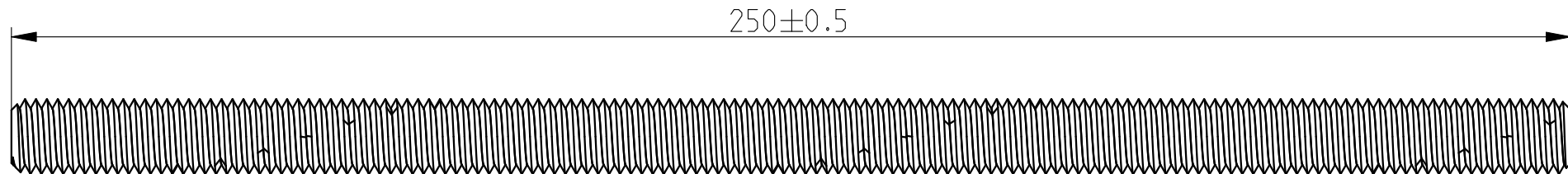
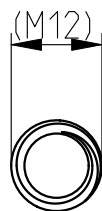
E


D

C

B

A



										Weight		0.2 kg																																																																																
										Item		Qty		Id. no		Description		Drg. no./Type		Material																																																																								
Permissible deviations for dimensions without a tolerance indication										This drawing is our property. It is not to be traced, copied or published without our written consent, nor to be misused in any way.		Status		Sign.		Date				Weld. drg./Cast. drg.																																																																								
<table border="1"> <thead> <tr> <th rowspan="2">Linear dimension or shortest leg of an angle</th> <th colspan="2">Machined: Tolerance</th> <th colspan="2">Welded: Tolerance</th> </tr> <tr> <th>Linear</th> <th>angle</th> <th>Linear</th> <th>angle</th> </tr> </thead> <tbody> <tr> <td>over</td> <td>to</td> <td></td> <td></td> <td></td> <td></td> <td></td> </tr> <tr> <td>6</td> <td>30</td> <td>± 0,1</td> <td>± 0,5°</td> <td rowspan="2">± 1</td> <td rowspan="2">± 0,6°</td> <td rowspan="2"></td> </tr> <tr> <td>6</td> <td>30</td> <td>± 0,2</td> <td></td> </tr> <tr> <td>30</td> <td>120</td> <td>± 0,3</td> <td>± 0,4°</td> <td></td> <td></td> <td></td> </tr> <tr> <td>120</td> <td>315</td> <td>± 0,5</td> <td>± 0,3°</td> <td>± 1,5</td> <td></td> <td></td> </tr> <tr> <td>315</td> <td>1000</td> <td>± 0,8</td> <td></td> <td>± 2</td> <td>± 0,5°</td> <td></td> </tr> <tr> <td>1000</td> <td>2000</td> <td>± 1,2</td> <td rowspan="3">± 0,2°</td> <td>± 3</td> <td></td> <td></td> </tr> <tr> <td>2000</td> <td>4000</td> <td>± 2</td> <td>± 4</td> <td>± 0,3°</td> <td></td> <td></td> </tr> <tr> <td>4000</td> <td>8000</td> <td>± 3</td> <td>± 5</td> <td></td> <td></td> <td></td> </tr> </tbody> </table>												Linear dimension or shortest leg of an angle	Machined: Tolerance		Welded: Tolerance		Linear			angle	Linear	angle	over	to						6	30	± 0,1	± 0,5°	± 1	± 0,6°		6	30	± 0,2		30	120	± 0,3	± 0,4°				120	315	± 0,5	± 0,3°	± 1,5			315	1000	± 0,8		± 2	± 0,5°		1000	2000	± 1,2	± 0,2°	± 3			2000	4000	± 2	± 4	± 0,3°			4000	8000	± 3	± 5				R. Zone		R.O.no.		Sign./Date		Ctrl		Project. used	
Linear dimension or shortest leg of an angle	Machined: Tolerance		Welded: Tolerance																																																																																									
	Linear	angle	Linear	angle																																																																																								
over	to																																																																																											
6	30	± 0,1	± 0,5°	± 1	± 0,6°																																																																																							
6	30	± 0,2																																																																																										
30	120	± 0,3	± 0,4°																																																																																									
120	315	± 0,5	± 0,3°	± 1,5																																																																																								
315	1000	± 0,8		± 2	± 0,5°																																																																																							
1000	2000	± 1,2	± 0,2°	± 3																																																																																								
2000	4000	± 2		± 4	± 0,3°																																																																																							
4000	8000	± 3		± 5																																																																																								
Dim & tolerance										Upper Limit		Lower Limit		Constr.		MKHO		05-May-21		Replaces:																																																																								
Permissible deviations for dimensions with a tolerance indication										30		120		Drawn by		MKHO		05-May-21		596-346-3																																																																								
Surface roughness in Ra (µm)										120		315		Checked		ANHA		12-May-21		Replaced by:																																																																								
Fill. & edg. not dim.										2000		4000		Prot.rel.																																																																														
Edges										4000		8000		Prod.rel.		HAE		12-May-21																																																																										
BOLT THREADED										M12 X 250																																																																																		
										-																																																																																		