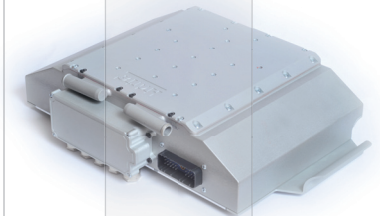
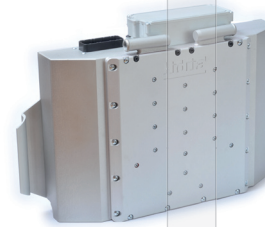
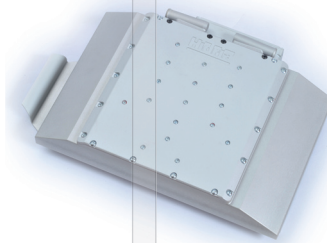
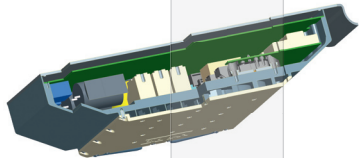
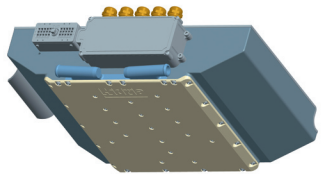


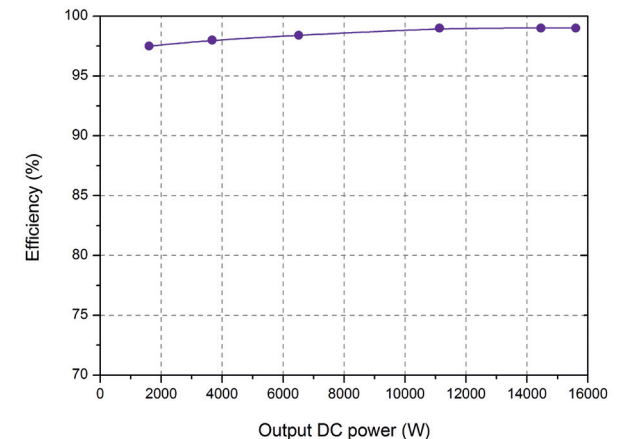
# Range Extender Power Control Unit (REPCU)

The Range Extender Power Control Unit (REPCU) enables a full integration of an e-machine drive into the Range Extender unit, allowing for the operation of e-machine in a motor as well as in a generator operation mode. A sophisticated power-stage topology and e-machine drive control algorithms deliver an outstanding efficiency and consequently reduced physical dimensions and cooling requirements of the REPCU.



Hidria d. d.  
Nazorjeva 6  
1000 Ljubljana  
SLOVENIA  
T: +386 41 767 429  
E: e-drives@hidria.com  
www.hidria.com

- Hi-performance e-machine drive control unit
- Bi-directional energy flow (motor & generator operation mode)
- State-of-the-art e-machine control algorithms
- Nominal / Peak output power: 15 kW / 30 kW
- Nominal / Breakdown voltage: 450 V / 1200 V
- Efficiency in Generator / Motor mode: > 98 % / > 95 %
- Continuously adjustable output voltage and power from 0 to  $V_{max}$ ,  $P_{max}$
- CAN bus connectivity
- Galvanic isolated design according to ISO TC22 SC21
- Thermally optimized, liquid cooled design
- Maximum inlet coolant temperature: 70 °C



# We have the vision. We know the way.